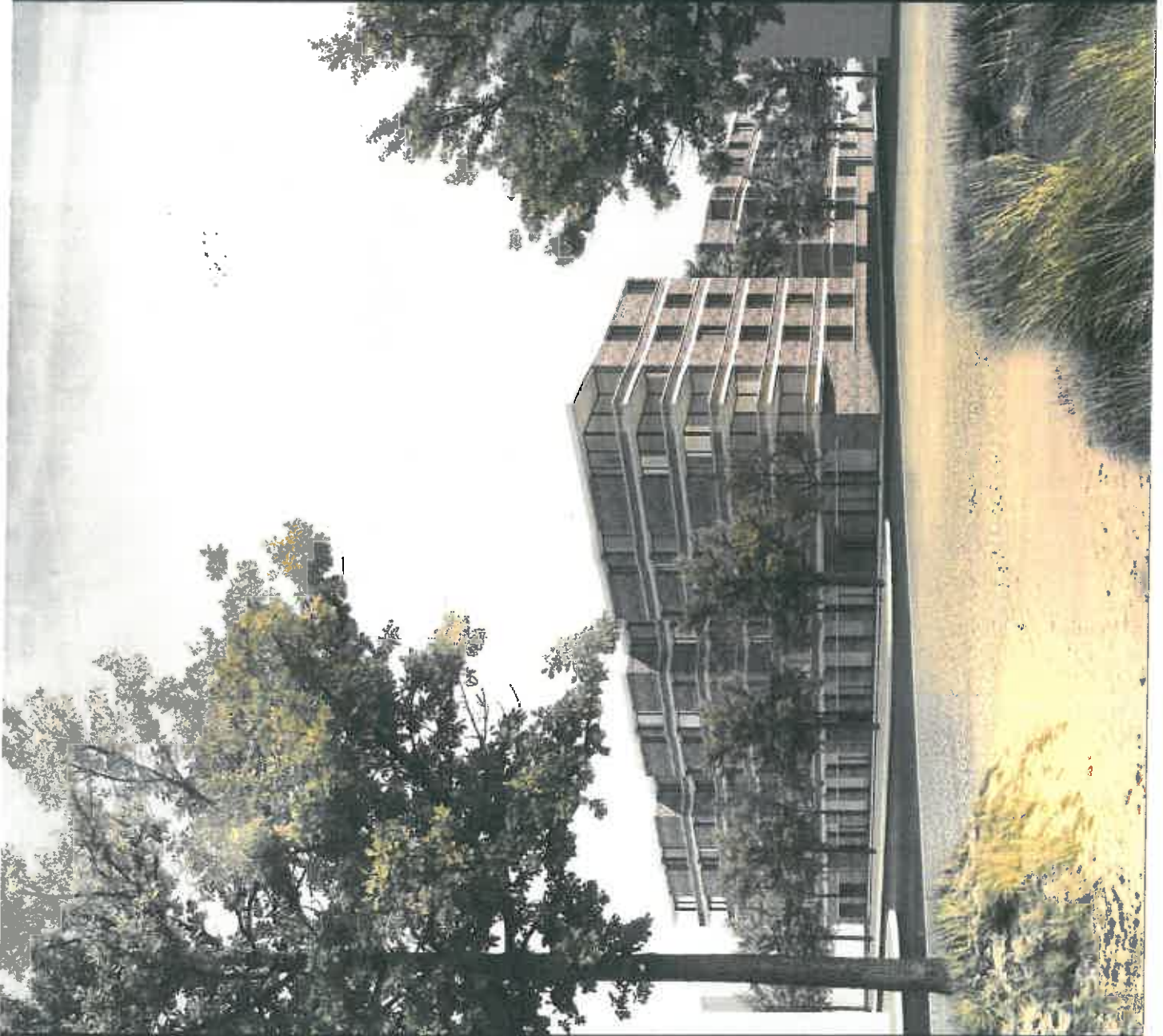
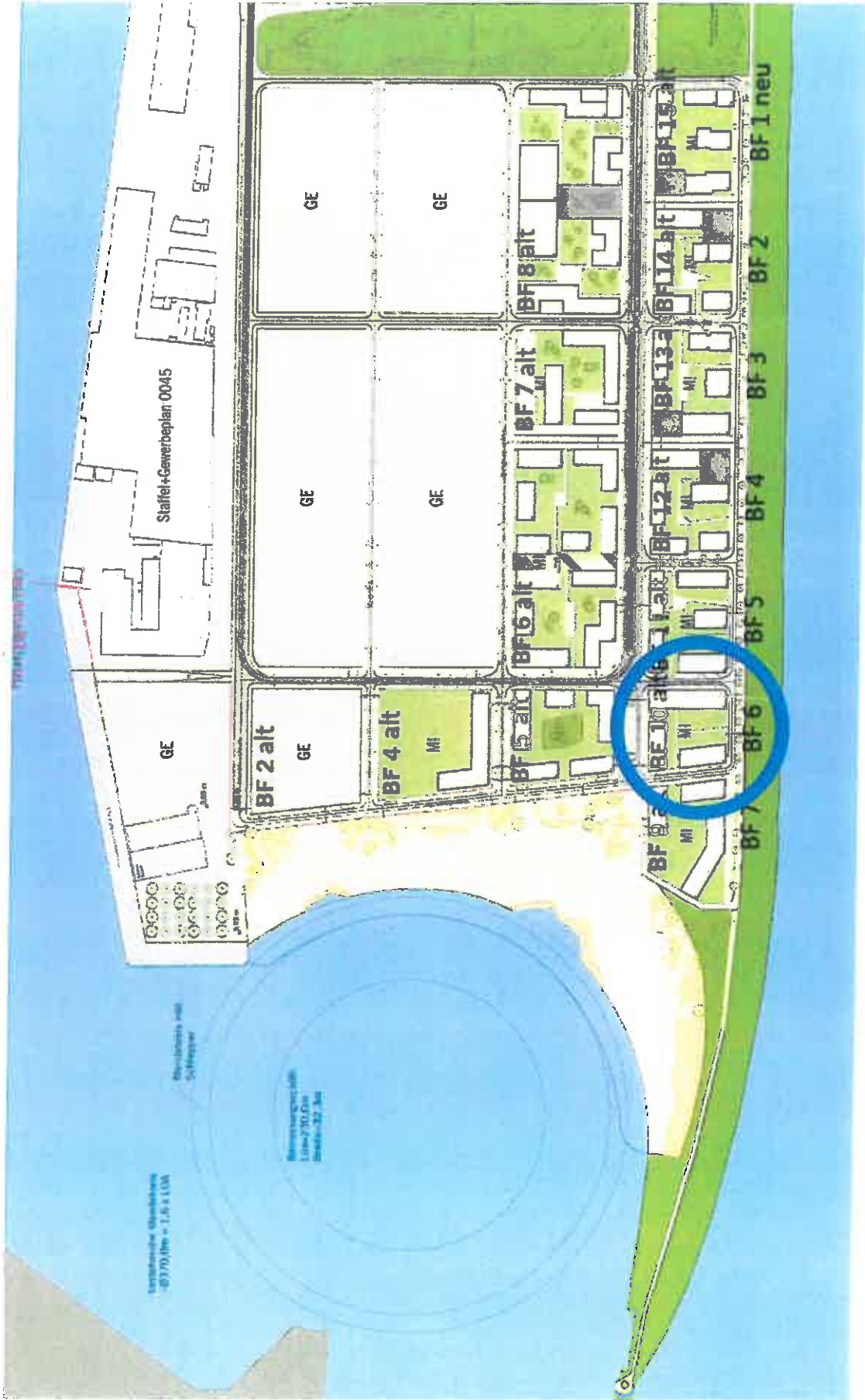


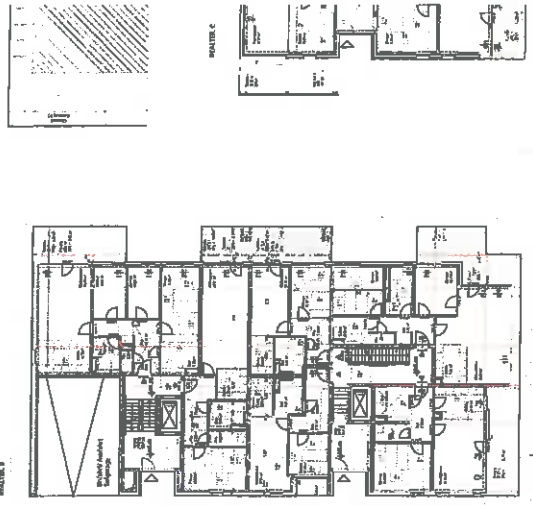
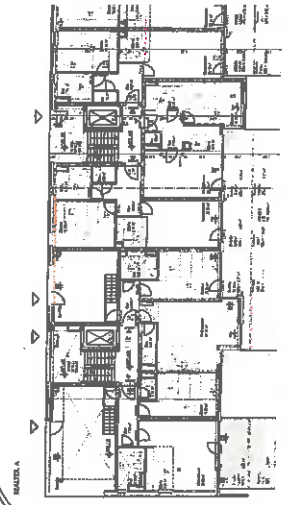
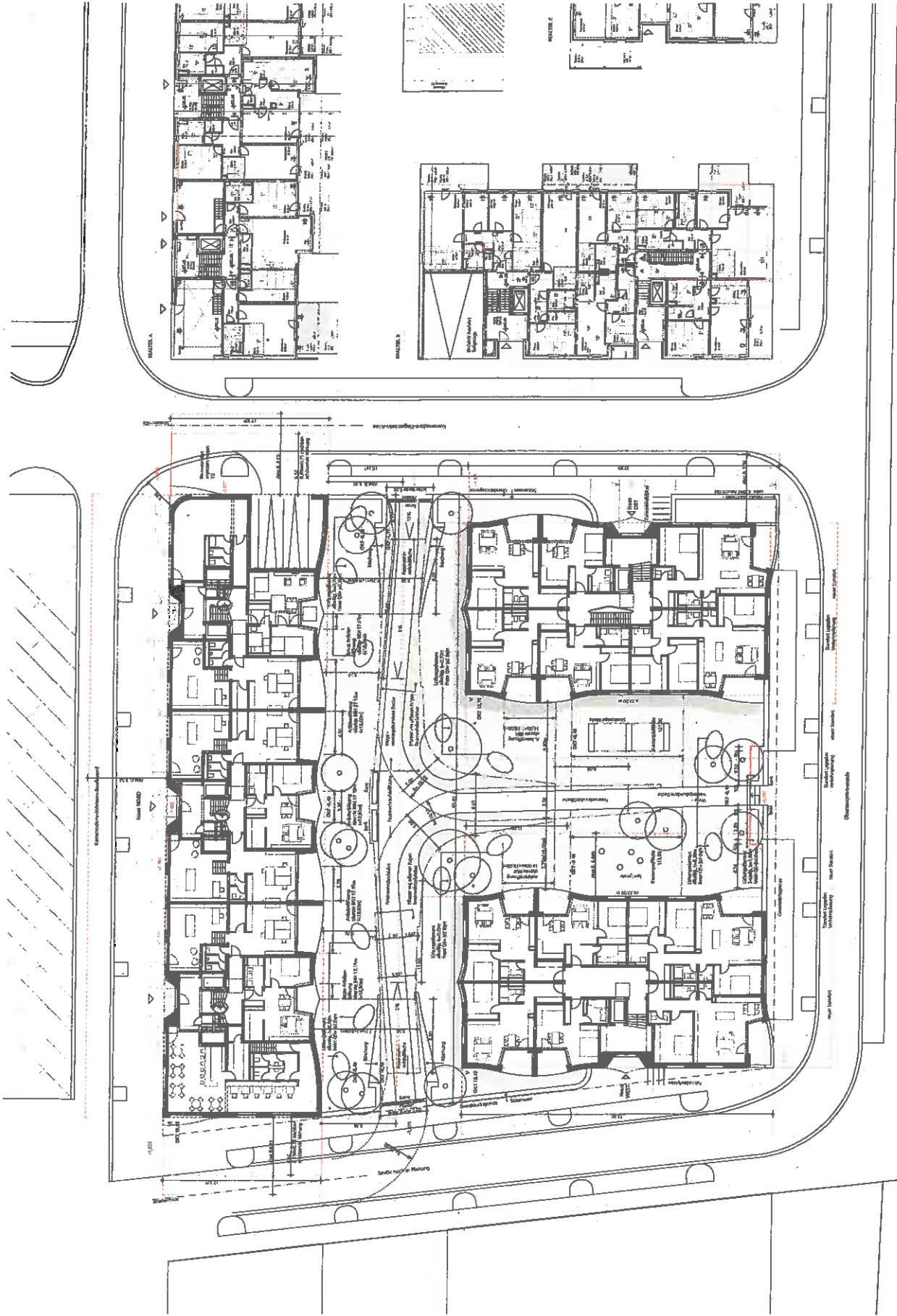
Attachment 2





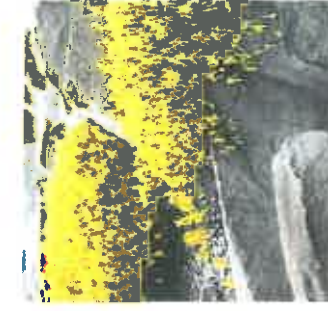
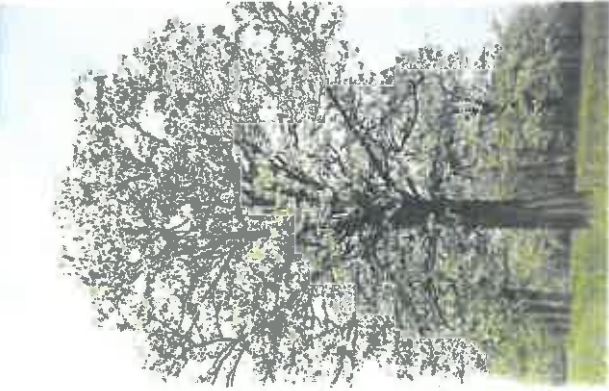
Überseestadt
Lageplan Baufeld 6

Deichhäuser Überseestadt Bremen
SPRINGER ARCHITEKTEN



Überseestadt
Lageplan Baufeld 6

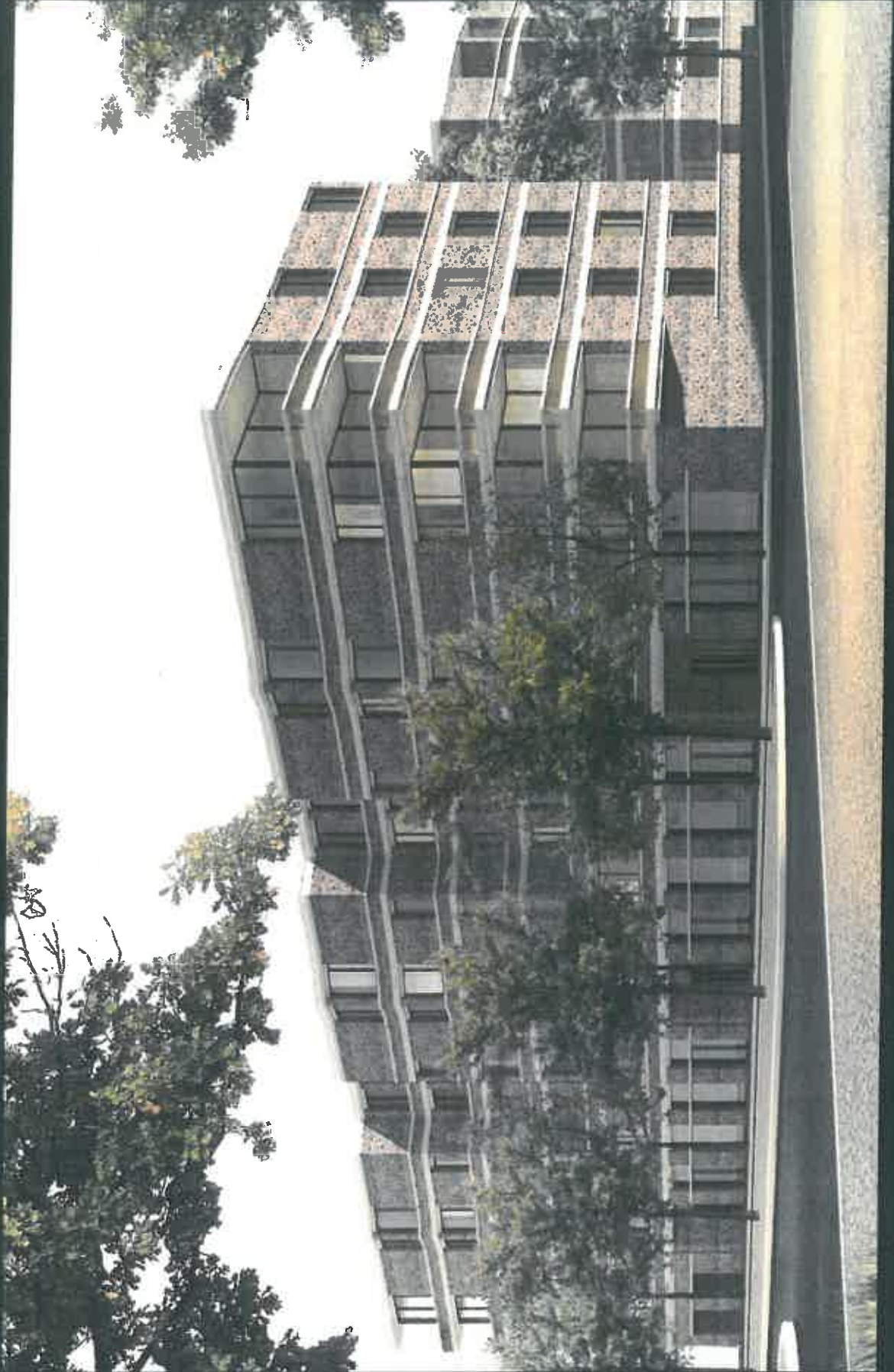
Deichhäuser Überseestadt Bremen
SPRINGER ARCHITEKTEN



Freianlagen

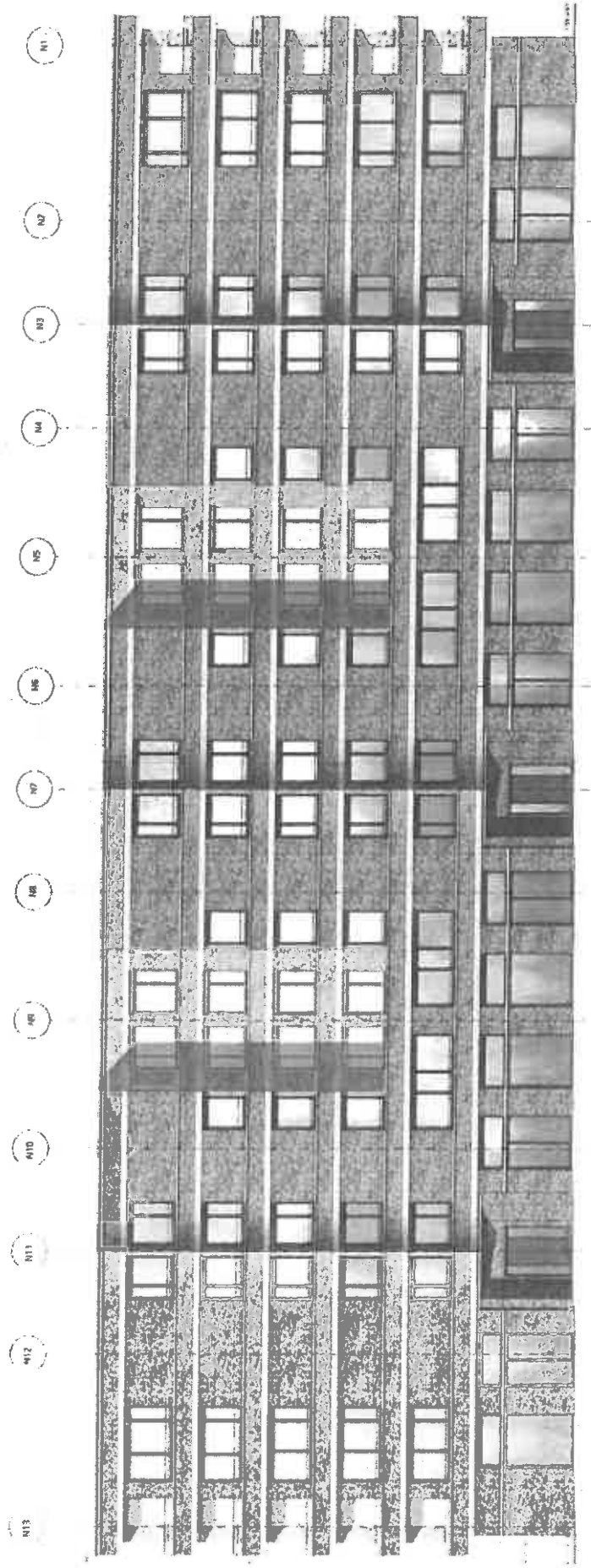
Vorschläge Pflanzen

Deichhäuser Überseestadt Bremen
SPRINGER ARCHITEKTEN



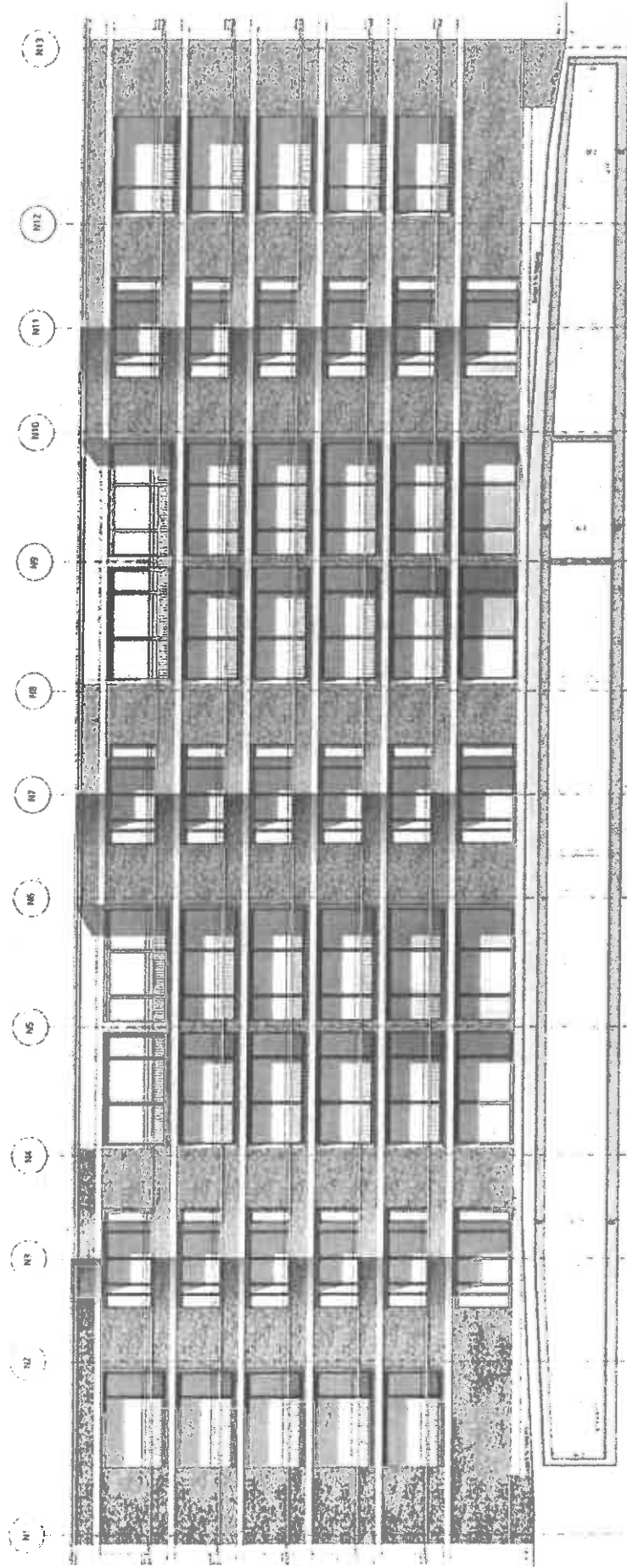
Part of the new development

Part of the new development



Haus Nord
Ansicht Nord (Straßenseite)

Deichhäuser Überseestadt Bremen
SPRINGER ARCHITEKTEN



Haus Nord

Ansicht Süd (Garten- und Wasserseite)

Deichhäuser Überseestadt Bremen
SPRINGER ARCHITEKTEN

01' 02'

03'

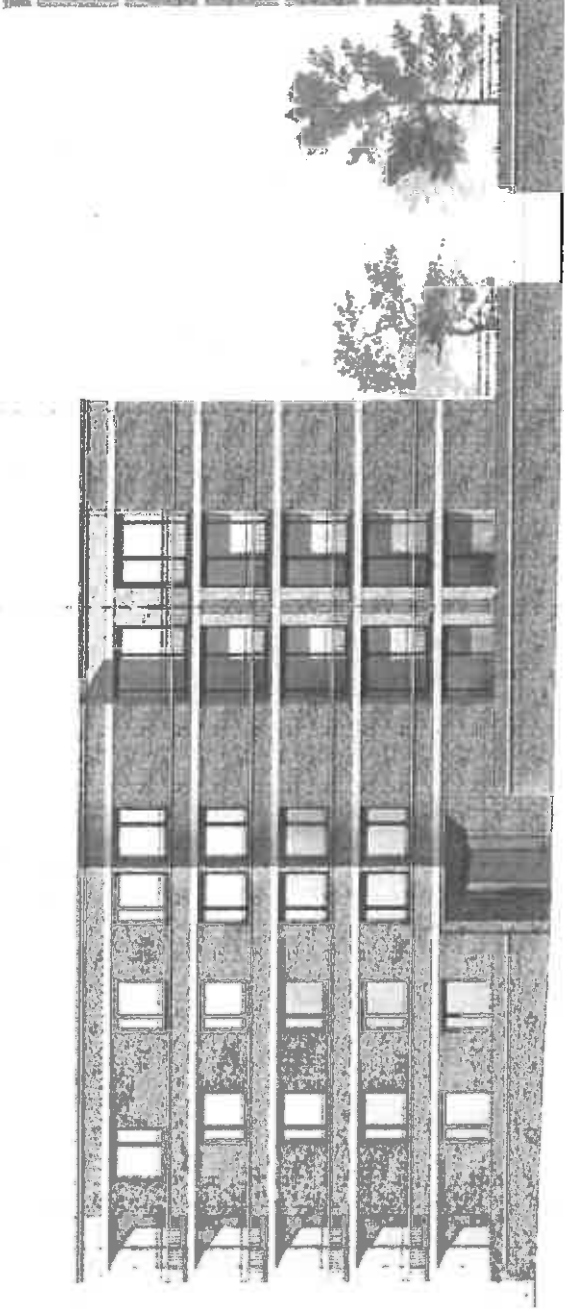
05'

08'

10'

12'

14'

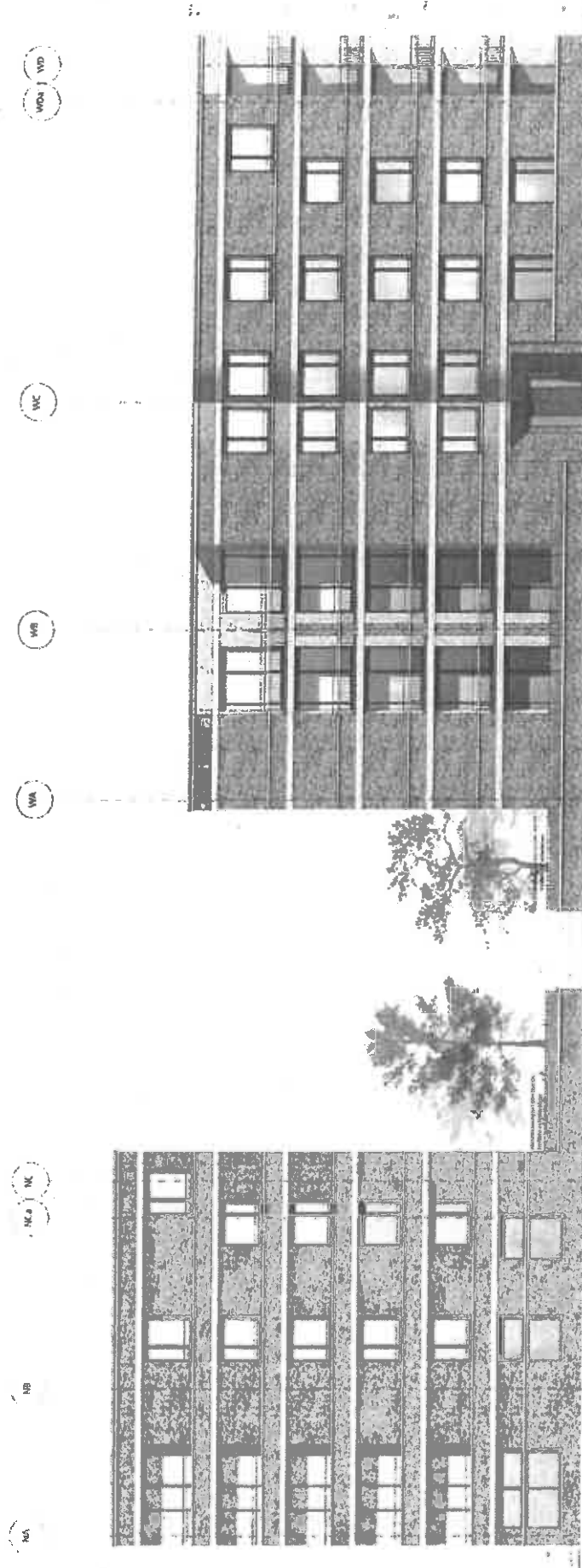


Häuser Ost und Nord
Ansicht Osten

Deichhäuser Überseestadt Bremen
SPRINGER ARCHITEKTEN

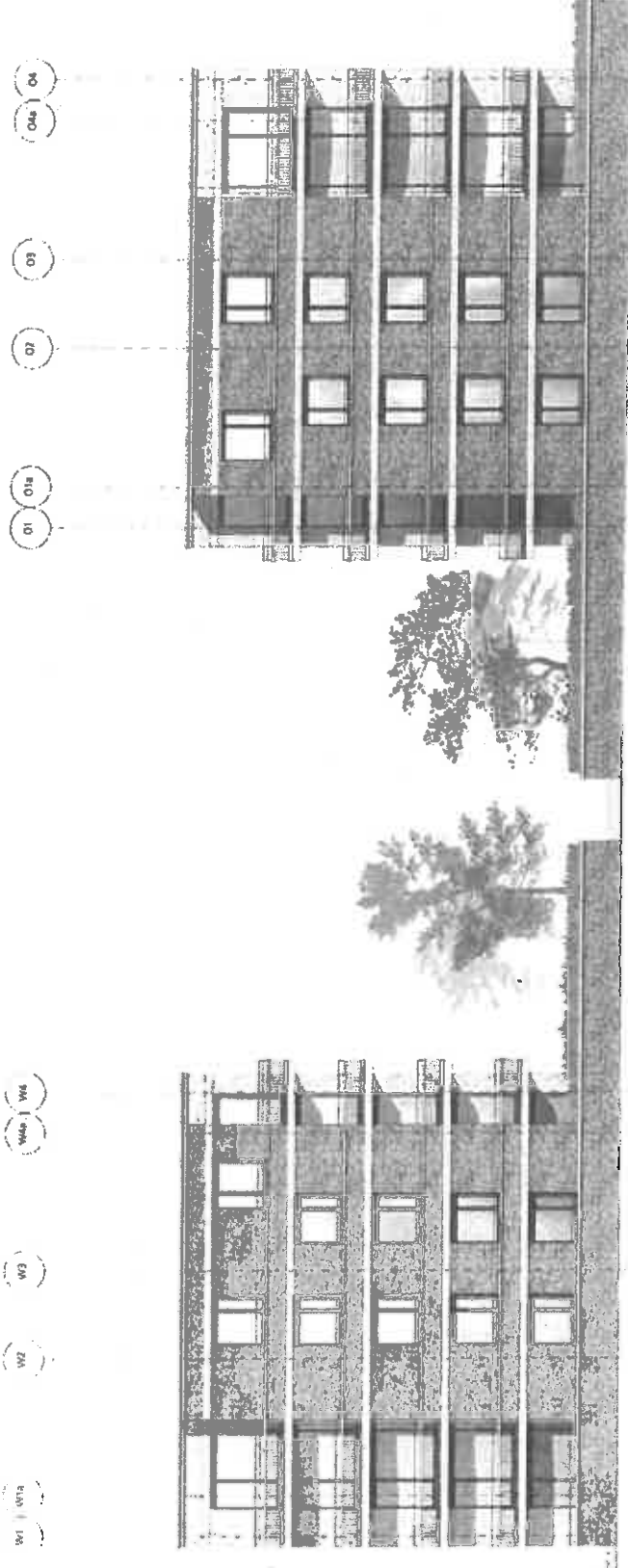


Architectural rendering of a modern building with a curved, perforated facade. The building is set against a clear sky with a few birds in flight. In the foreground, there are several trees and a paved area.



Häuser Nord und West
Ansicht Westen

Deichhäuser Überseestadt Bremen
SPRINGER ARCHITEKTEN



Häuser West und Ost
 Ansicht Süden, Weserseite

Deichhäuser Überseestadt Bremen
 SPRINGER ARCHITEKTEN

Delivering the value of
public infrastructure

