

The background is a light blue gradient with several realistic water droplets of various sizes scattered across it. The droplets have highlights and shadows, giving them a three-dimensional appearance. The word 'hanseWasser' is centered in a blue, sans-serif font.

hanseWasser

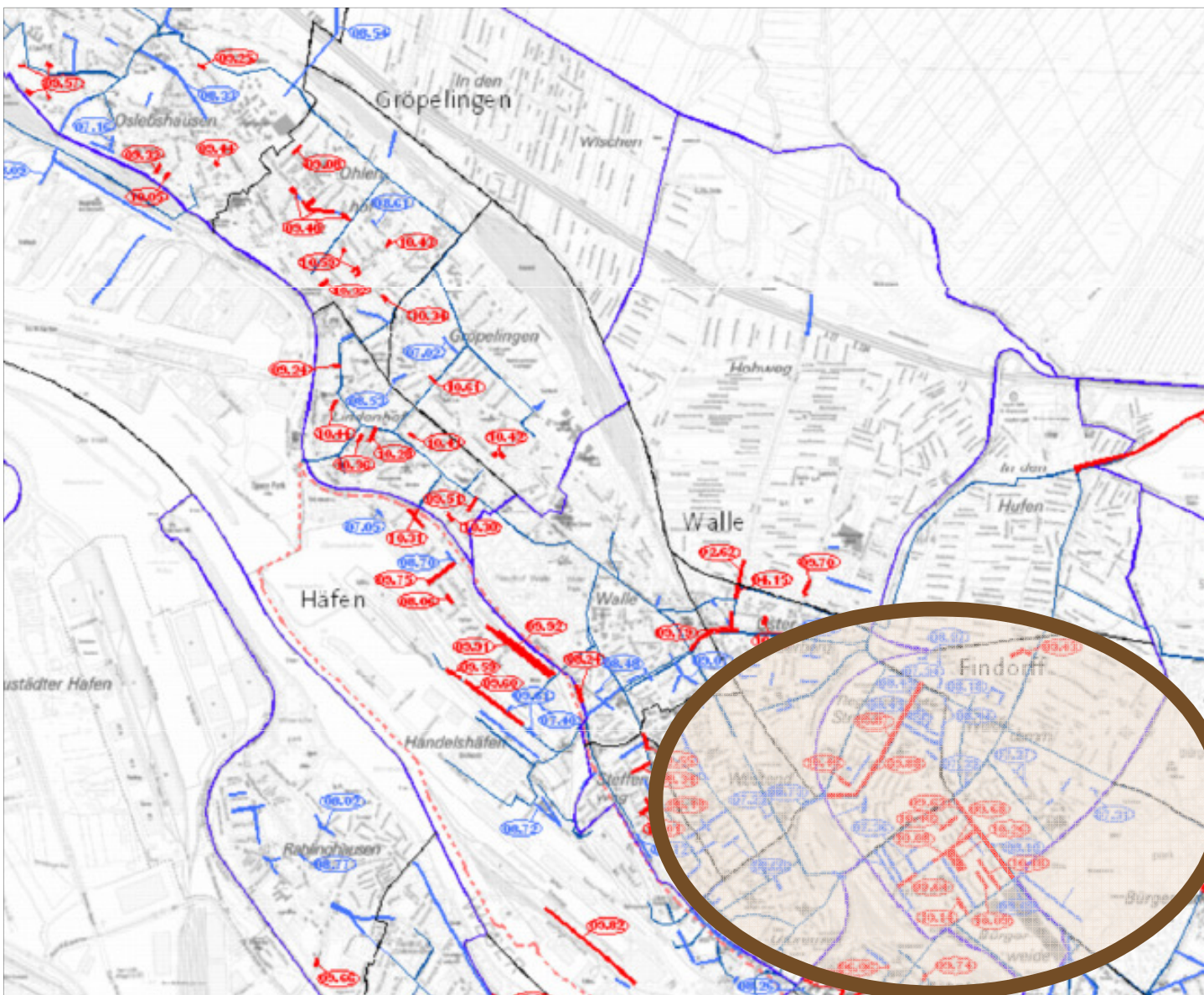
**Kanalbau 2009 bis 2011
in Bremen-Findorff**

Arne Schmüser

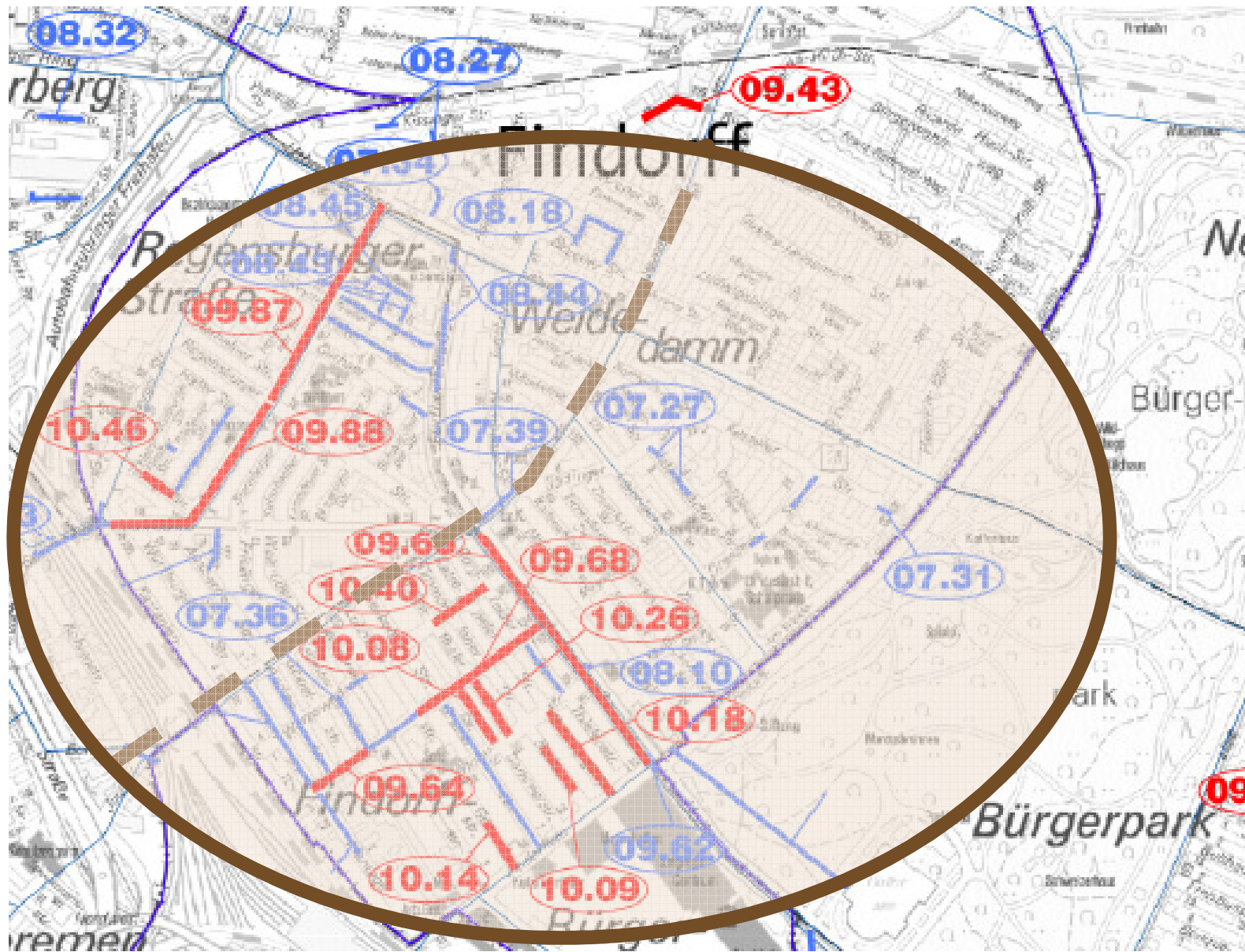
Inhalte

- **Übersicht über Maßnahmen im Bremer Westen**
- **Übersicht über Maßnahmen in Findorff und Abstimmungsgang mit Polizeirevier und Ortsamt**
- **Zeitplanung mit Darstellung von Freimarkt / Osterwiese**
- **„Baustellen aus der Vogelperspektive“**
 - **Westlich der Hemmstraße (Augsburger und Mensa)**
 - **Innerstädtischer Bereich**

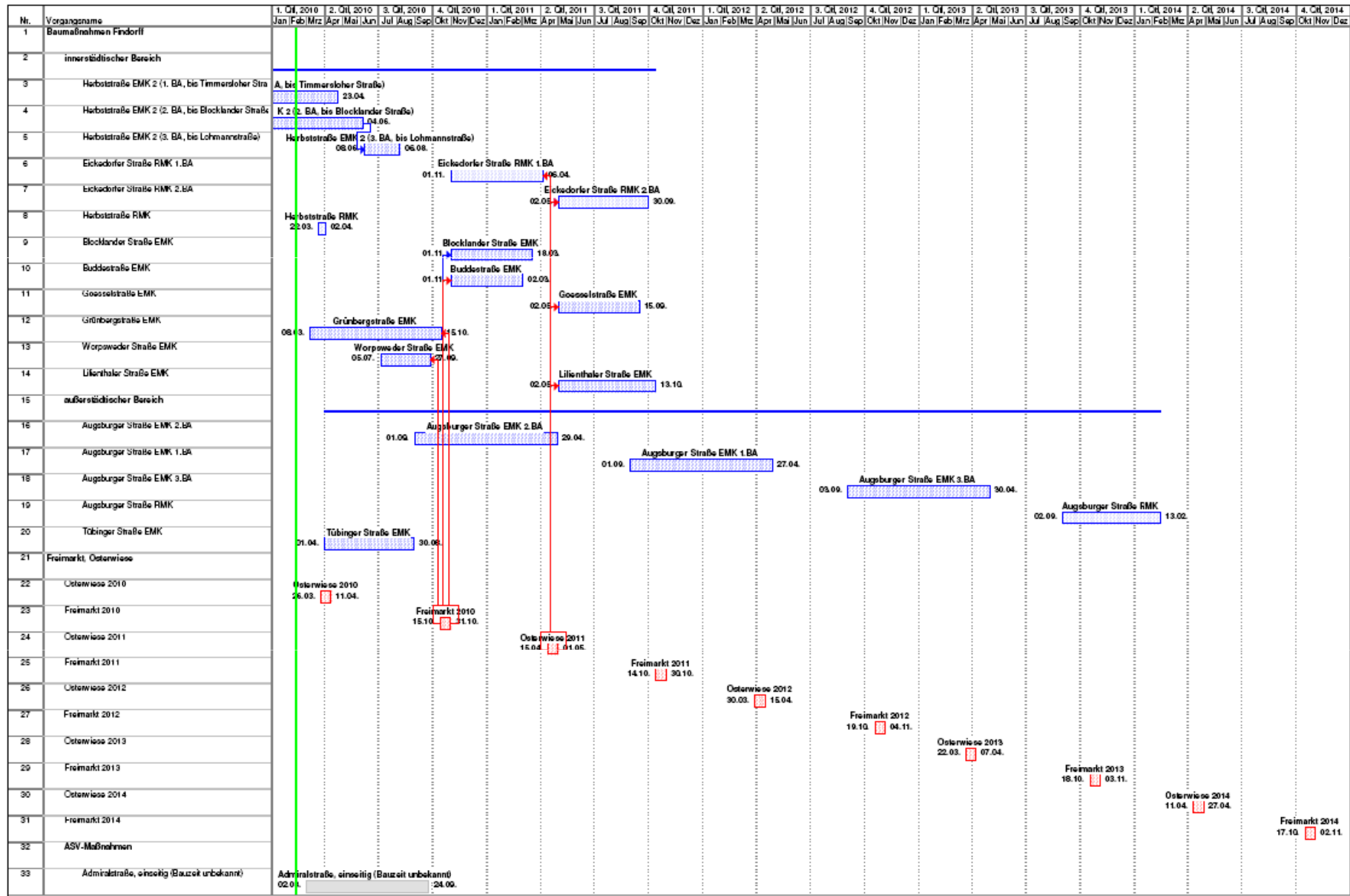
Übersicht über den Stadtteil



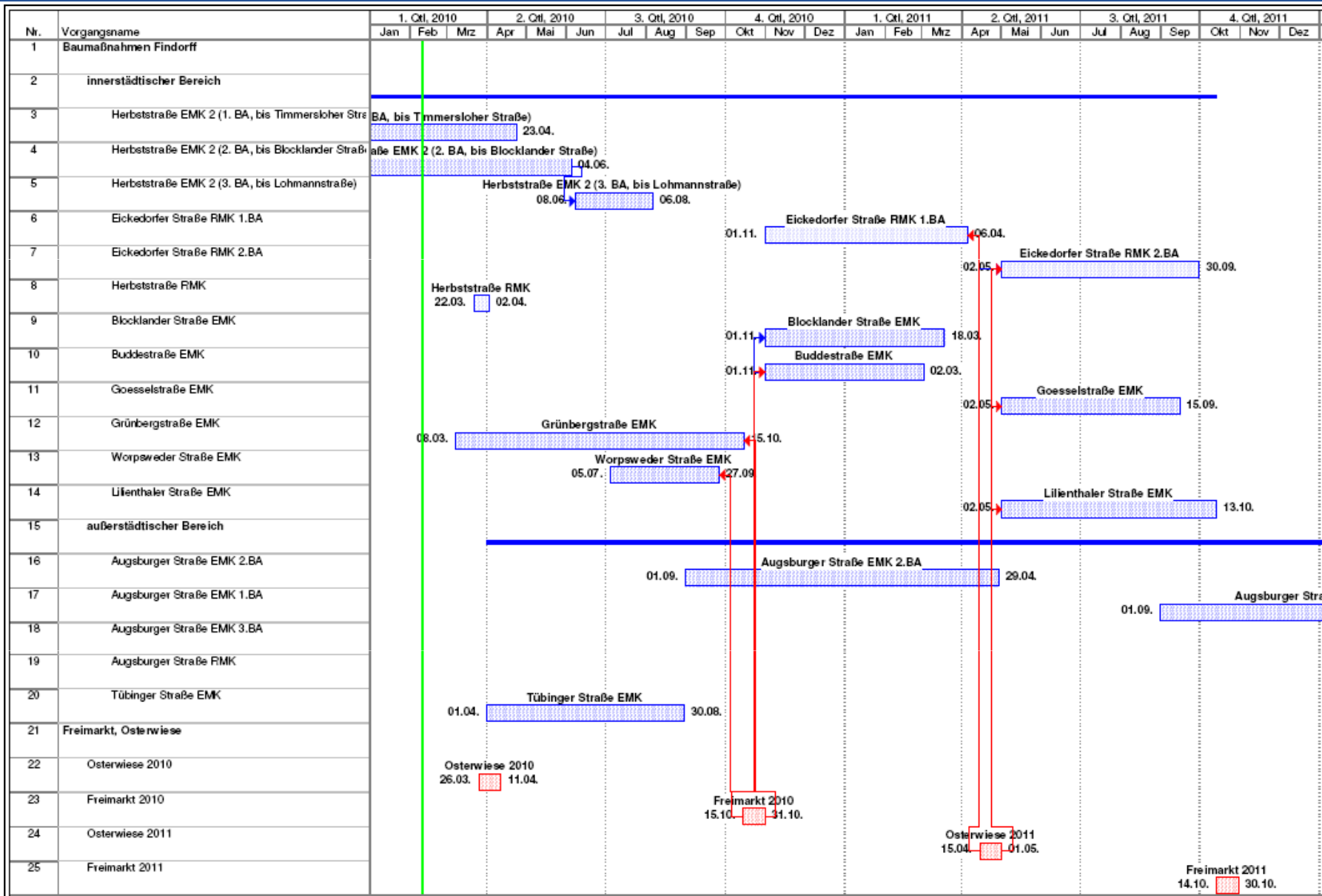
2 Bereiche für die weitere Betrachtung



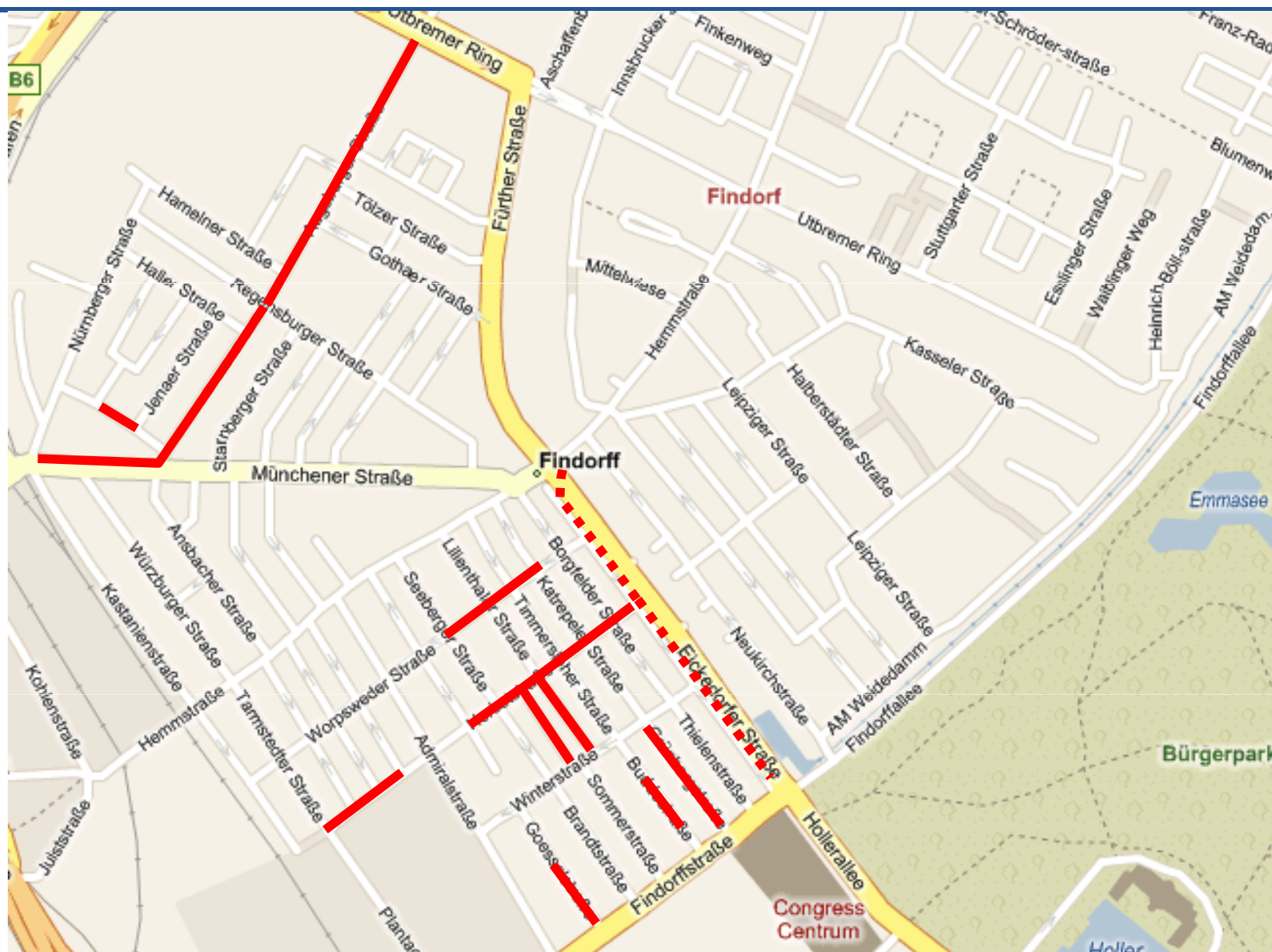
Zeitplan 2010 - 2014



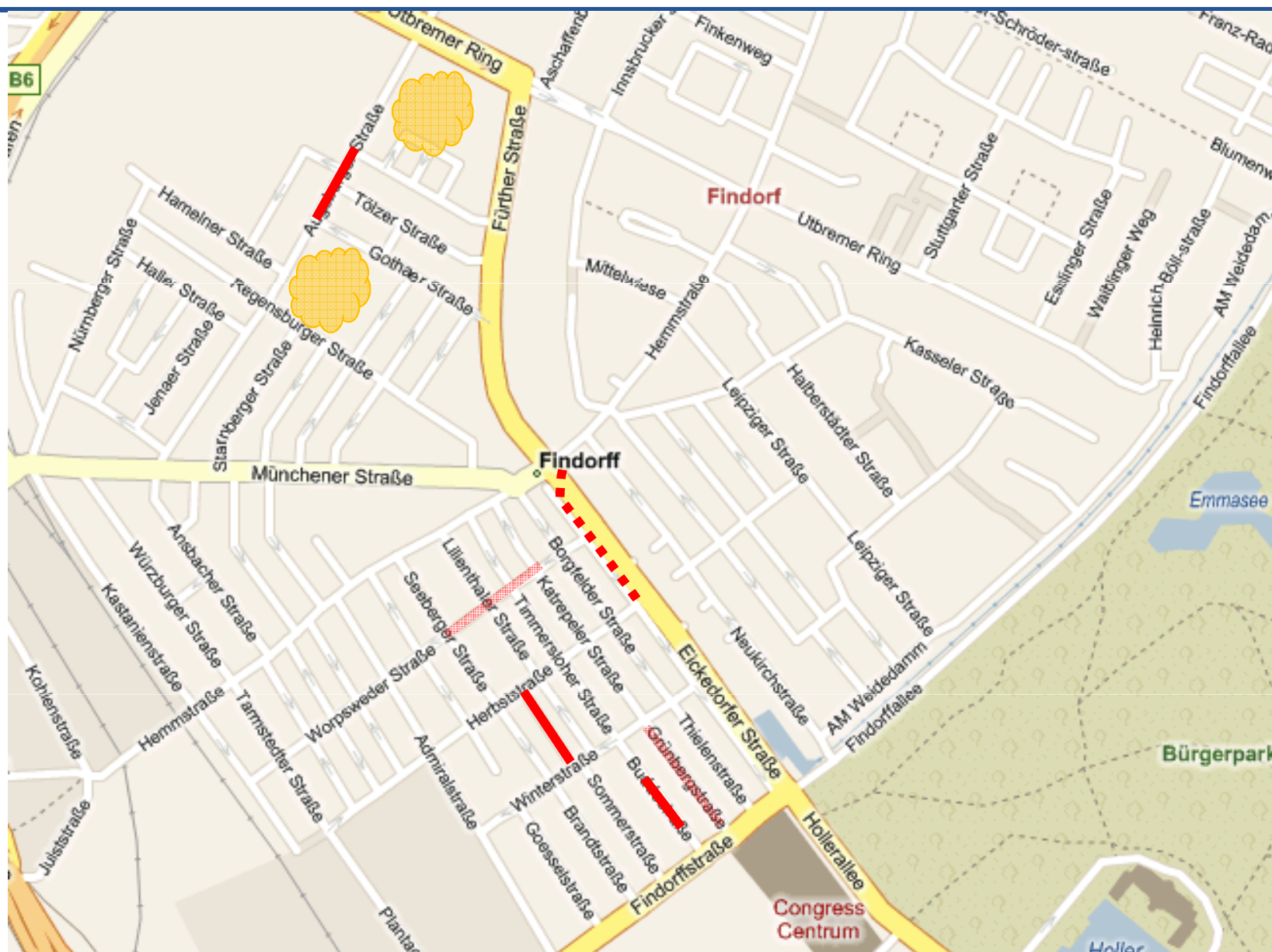
Zeitplan 2010 - 2011



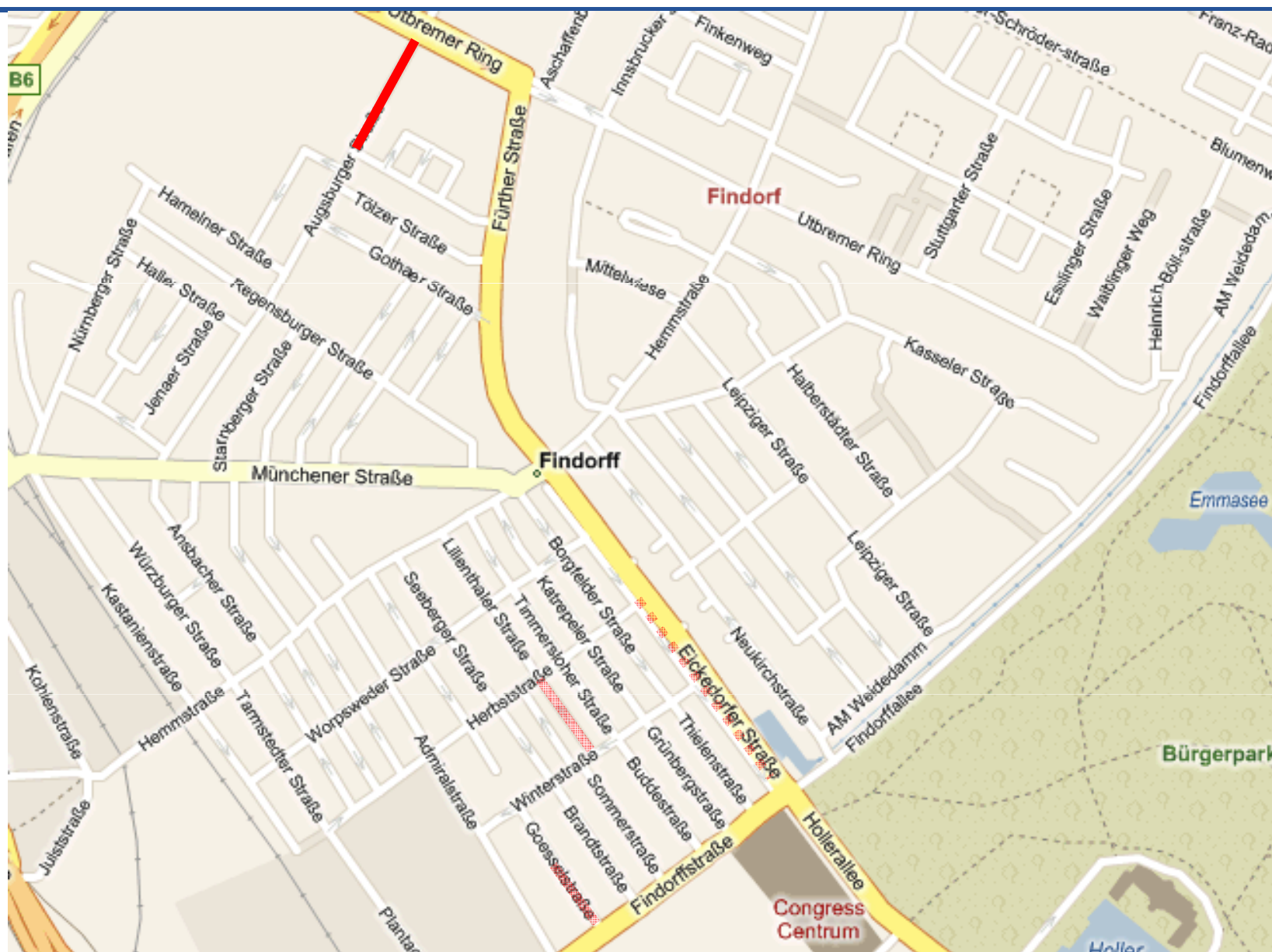
Gesamtübersicht (Stand: 10.02.2010)



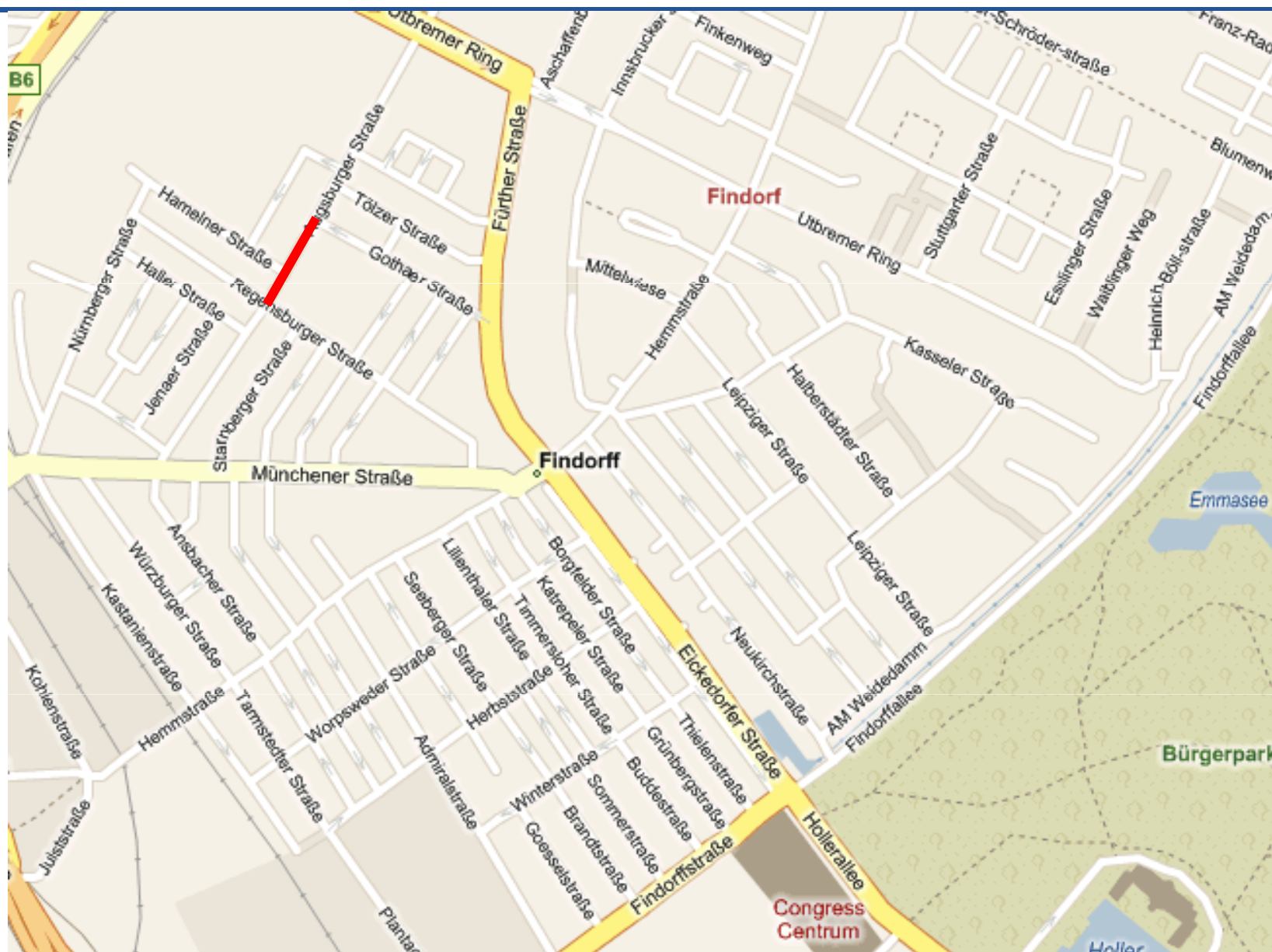
Augsburger Straße 2.BA: 09/'10 – 04/'11



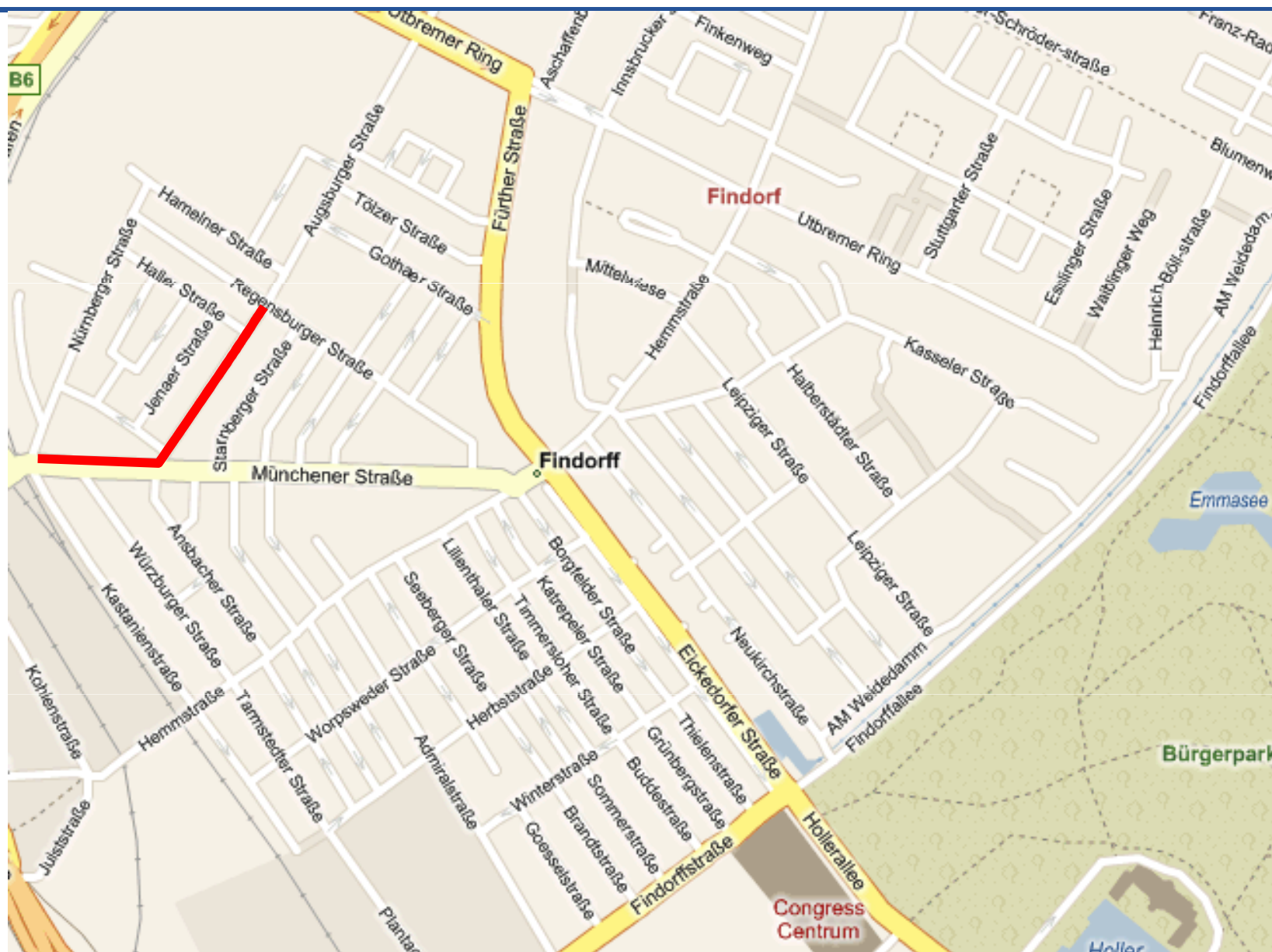
Augsburger Straße 1.BA: 09/'11 – 04/'12



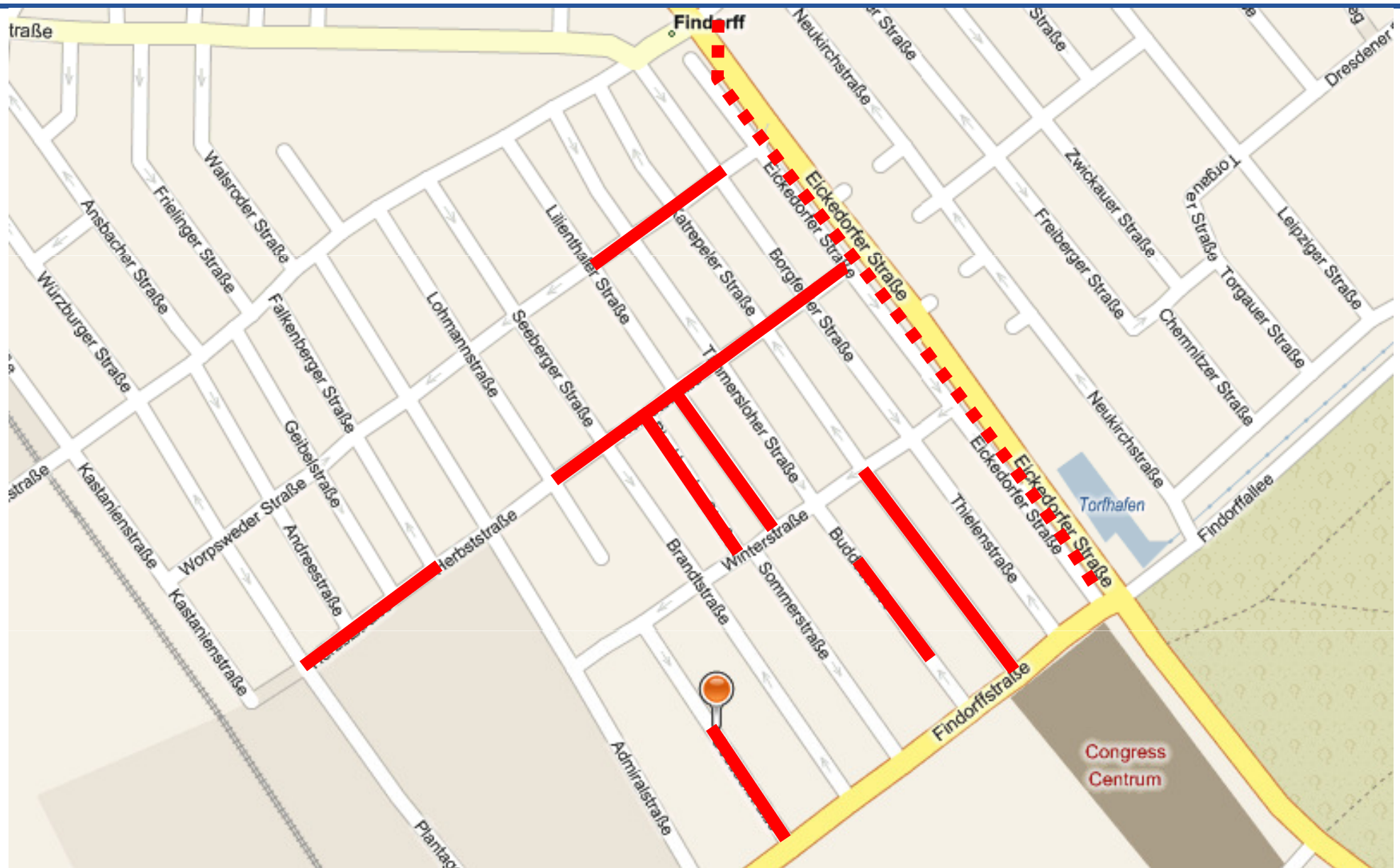
Augsburger Straße 3.BA: 09/'12 – 04/'13



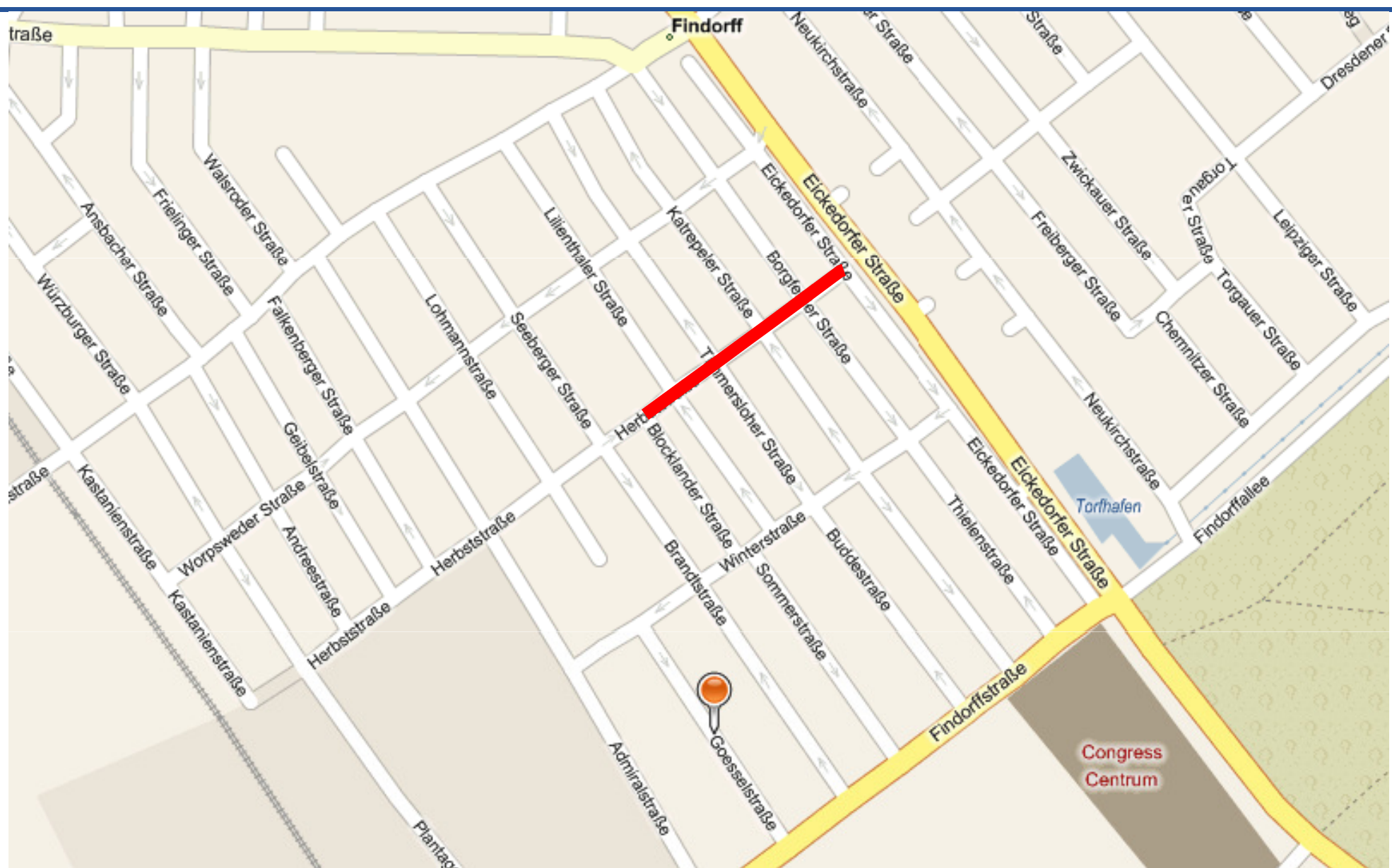
Augsburger Straße RMK: 09/'13 – 02/'14



Übersicht „Innerstädtischer Bereich“



Zeitschritt 1



Zeitschritt 2



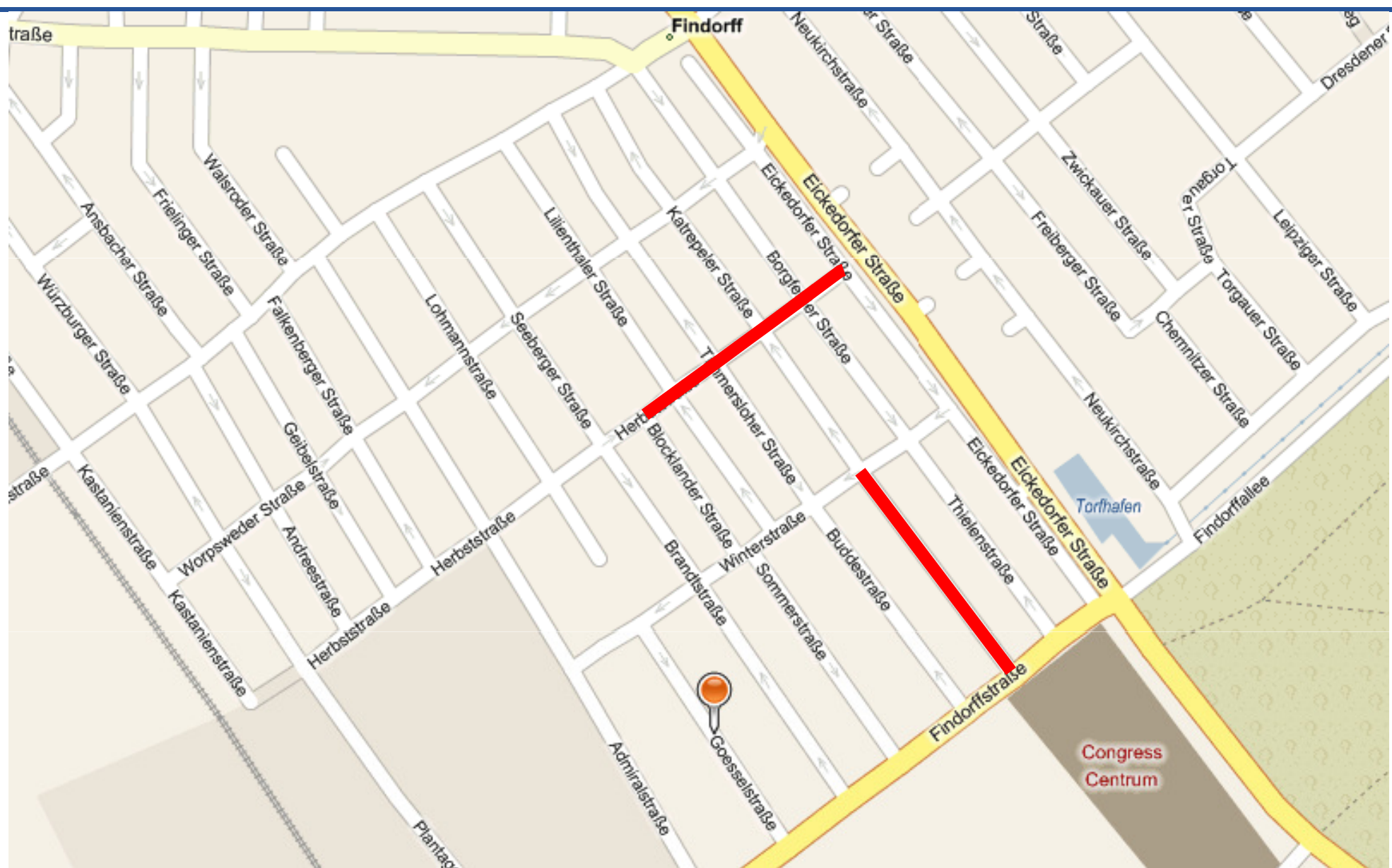
Osterwiese
2011

Zeitschritt 3

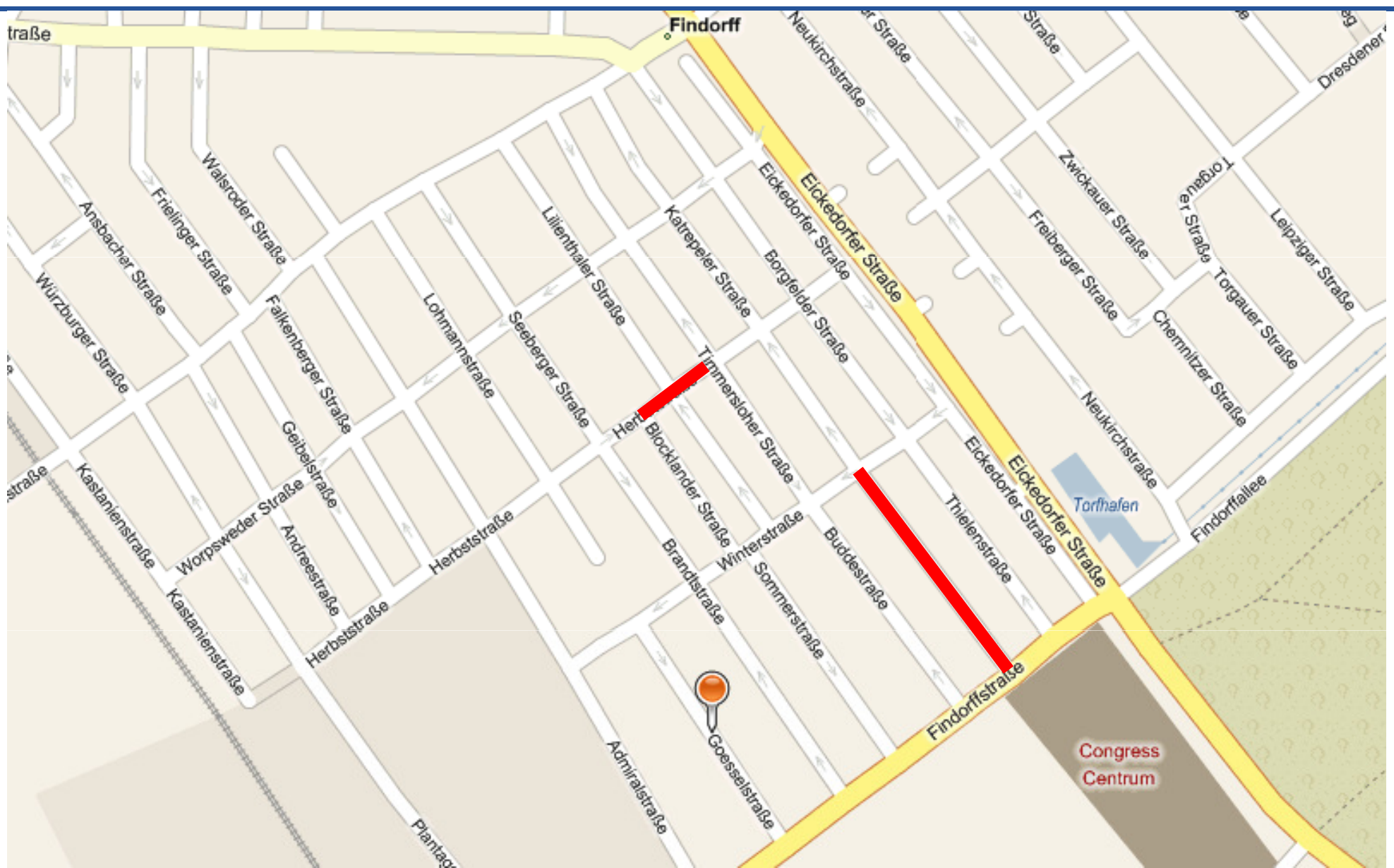


Osterwiese
2011

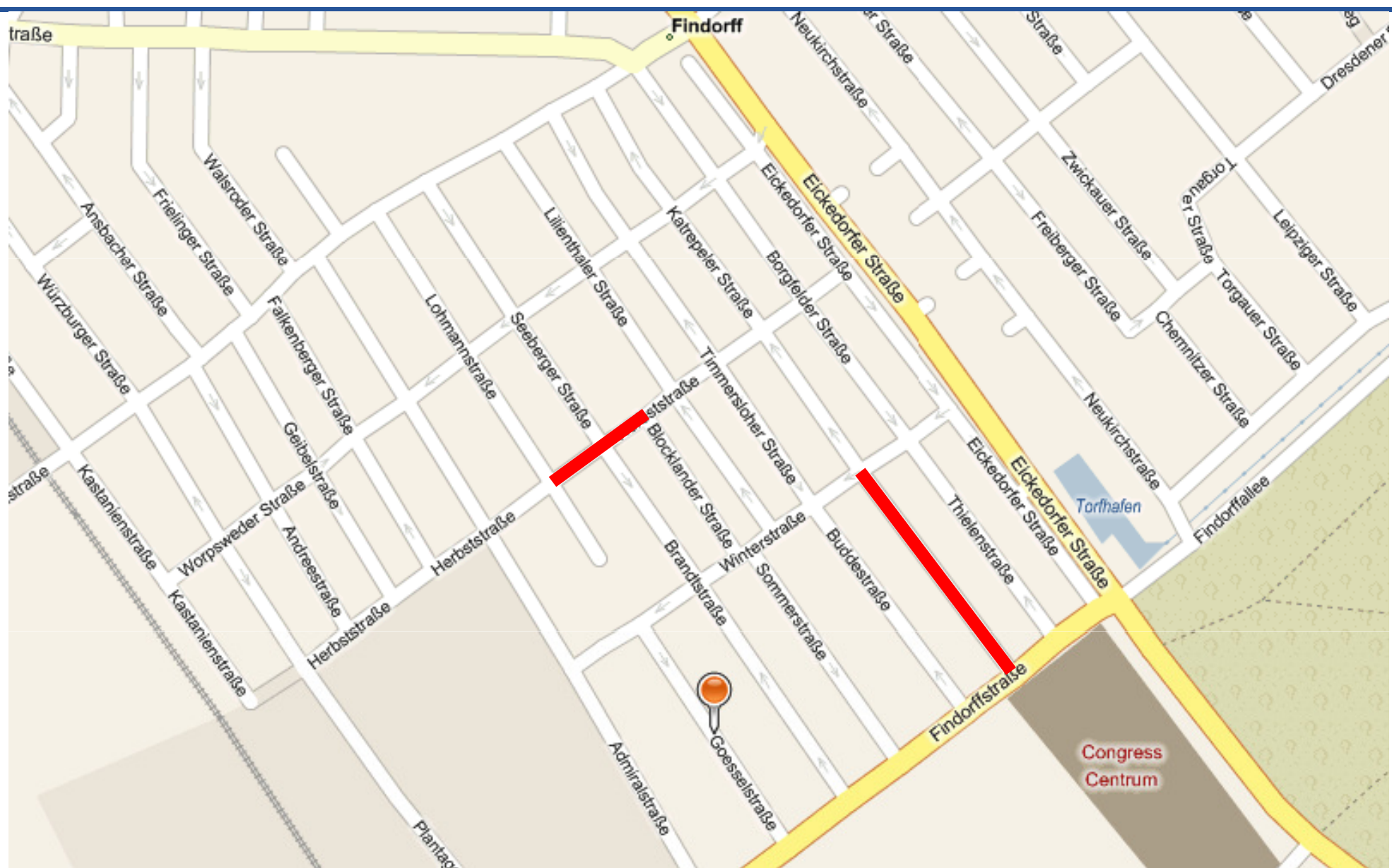
Zeitschritt 4



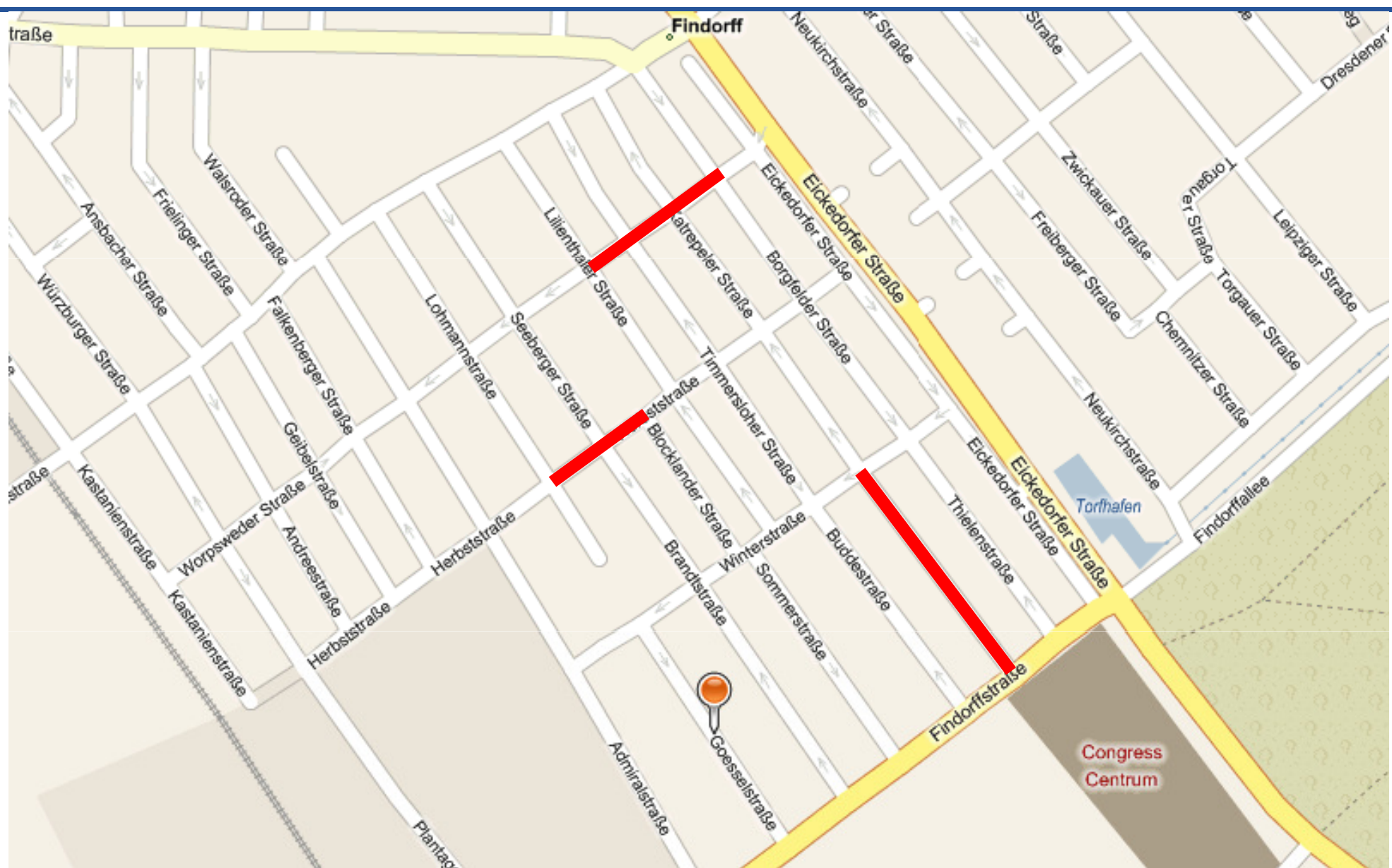
Zeitschritt 5



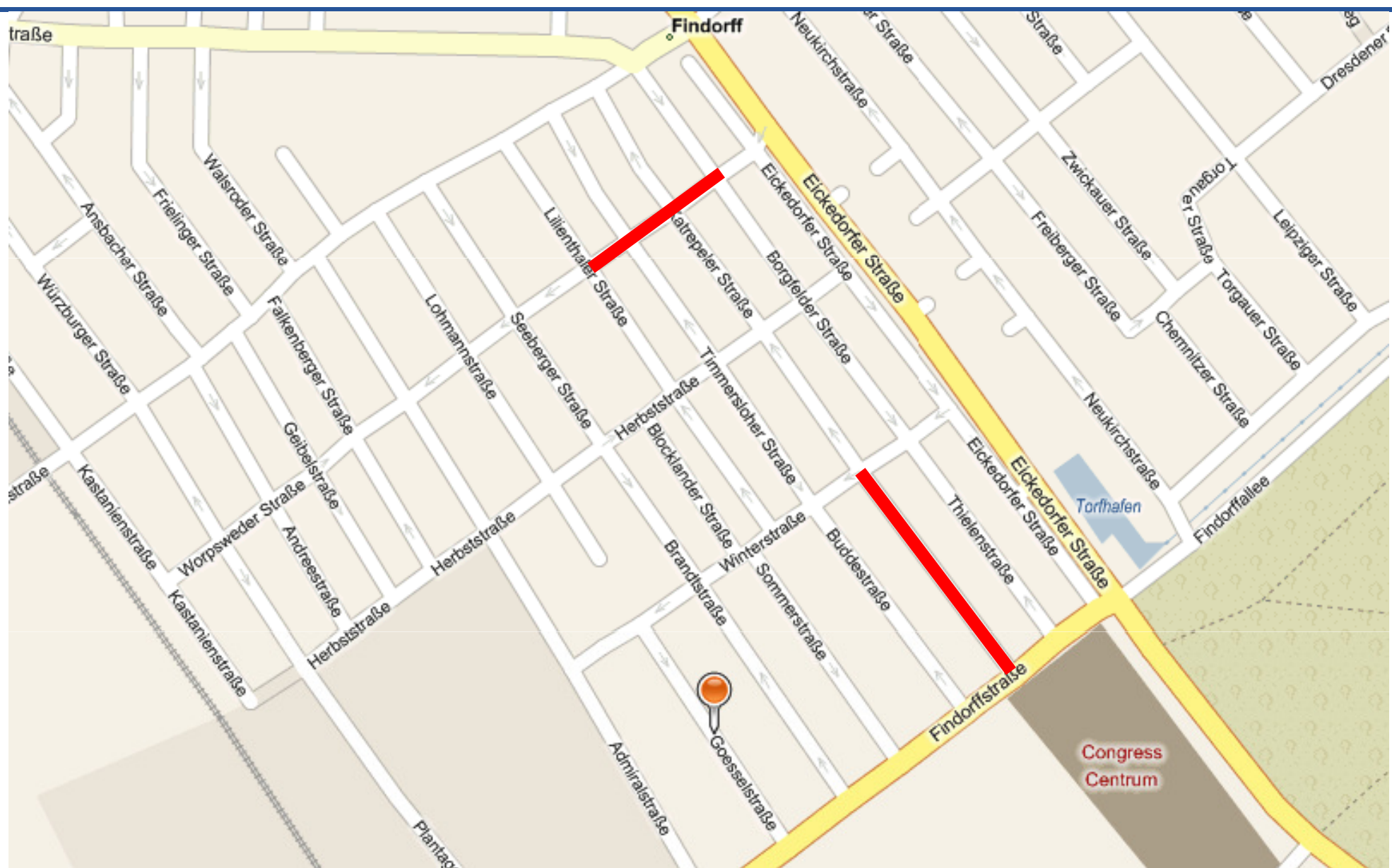
Zeitschritt 6



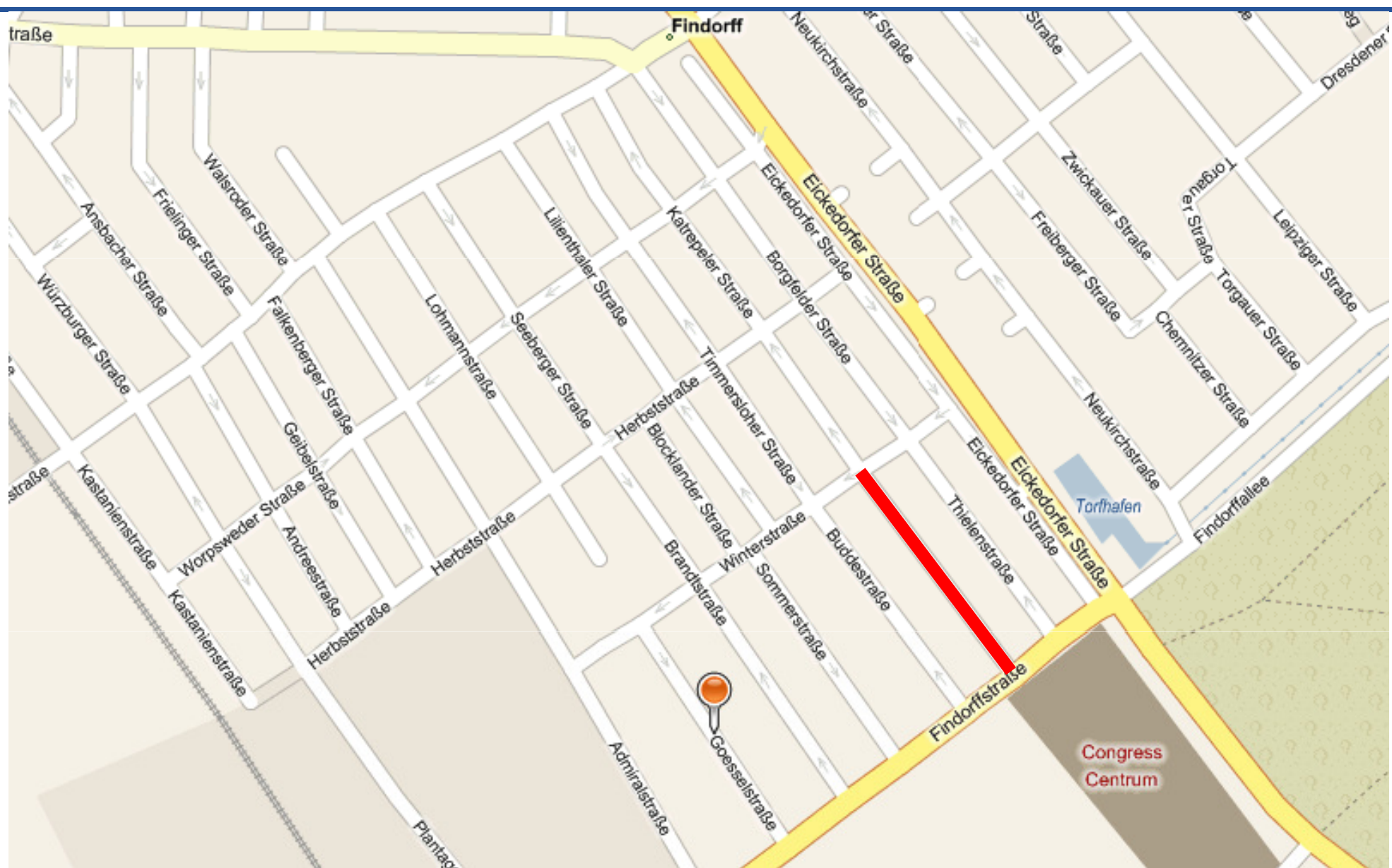
Zeitschritt 7



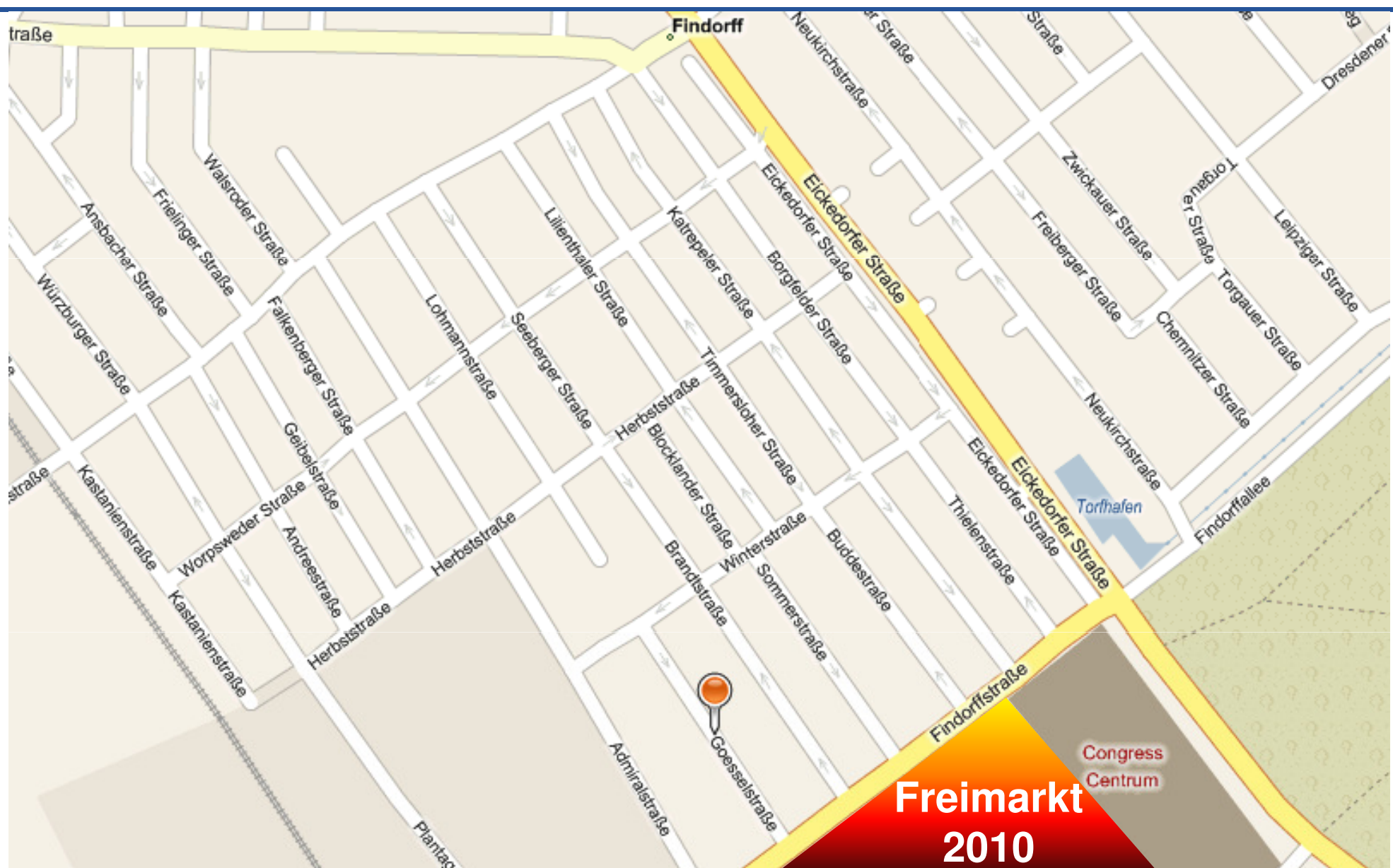
Zeitschritt 8



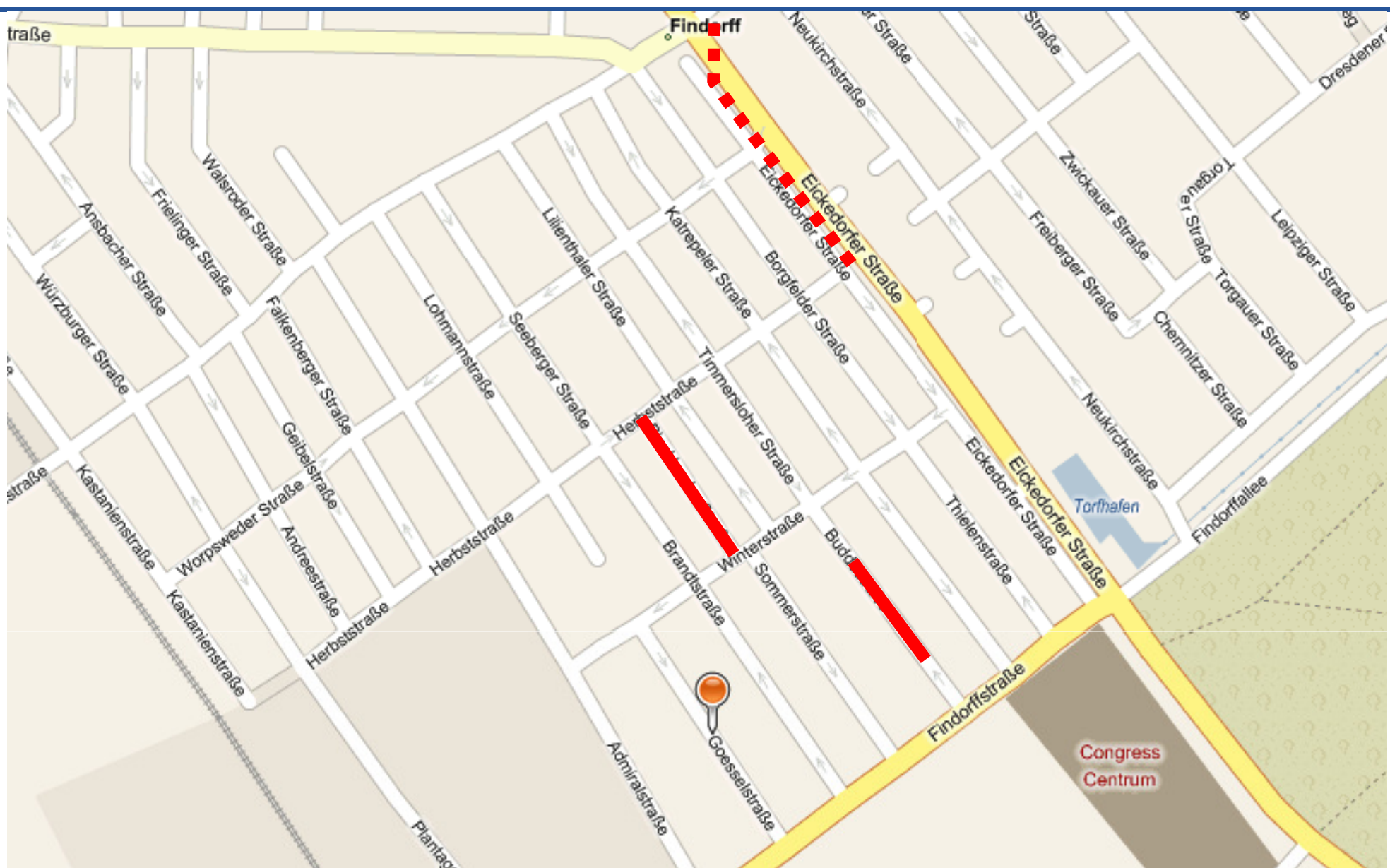
Zeitschritt 9



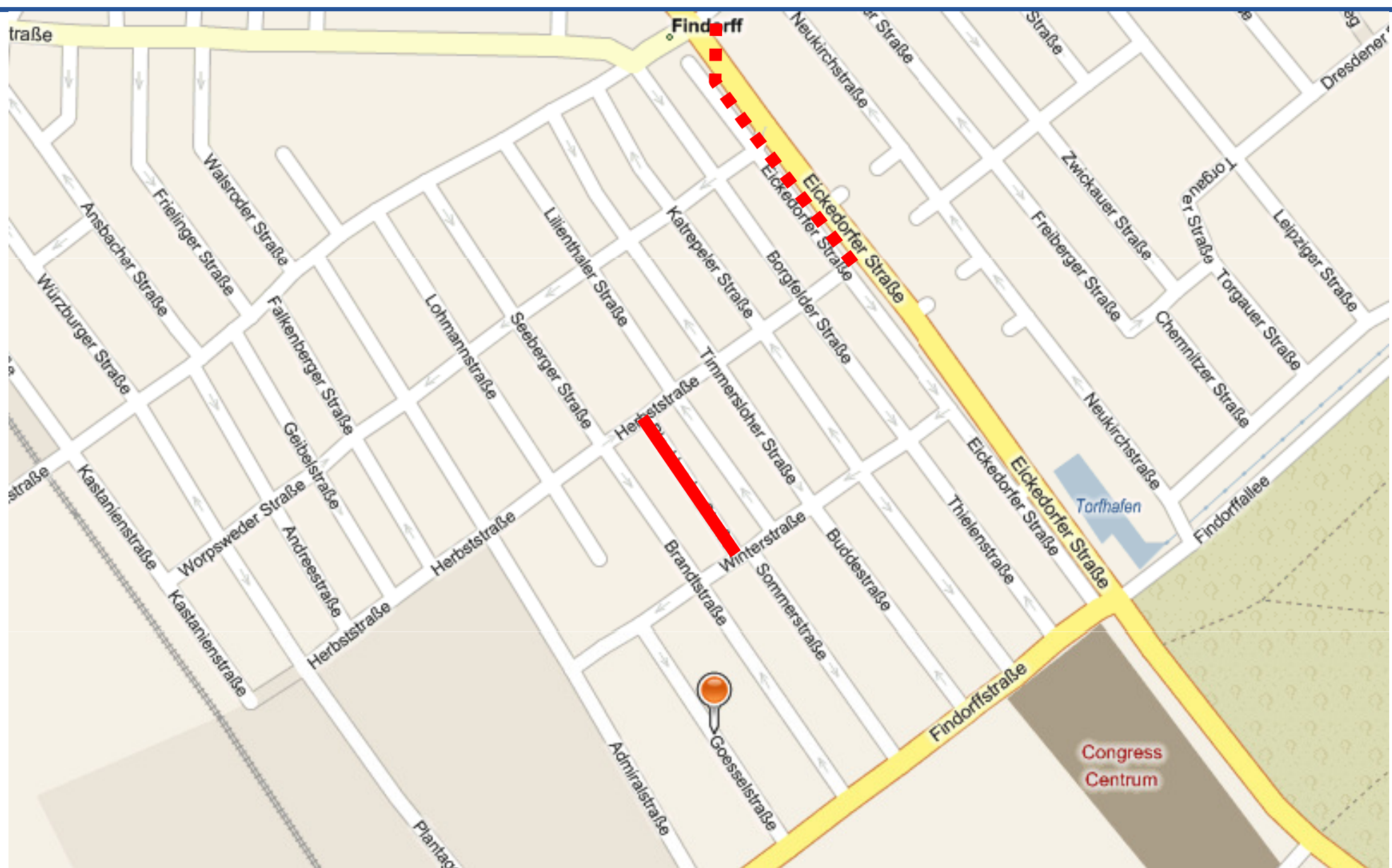
Zeitschritt 10



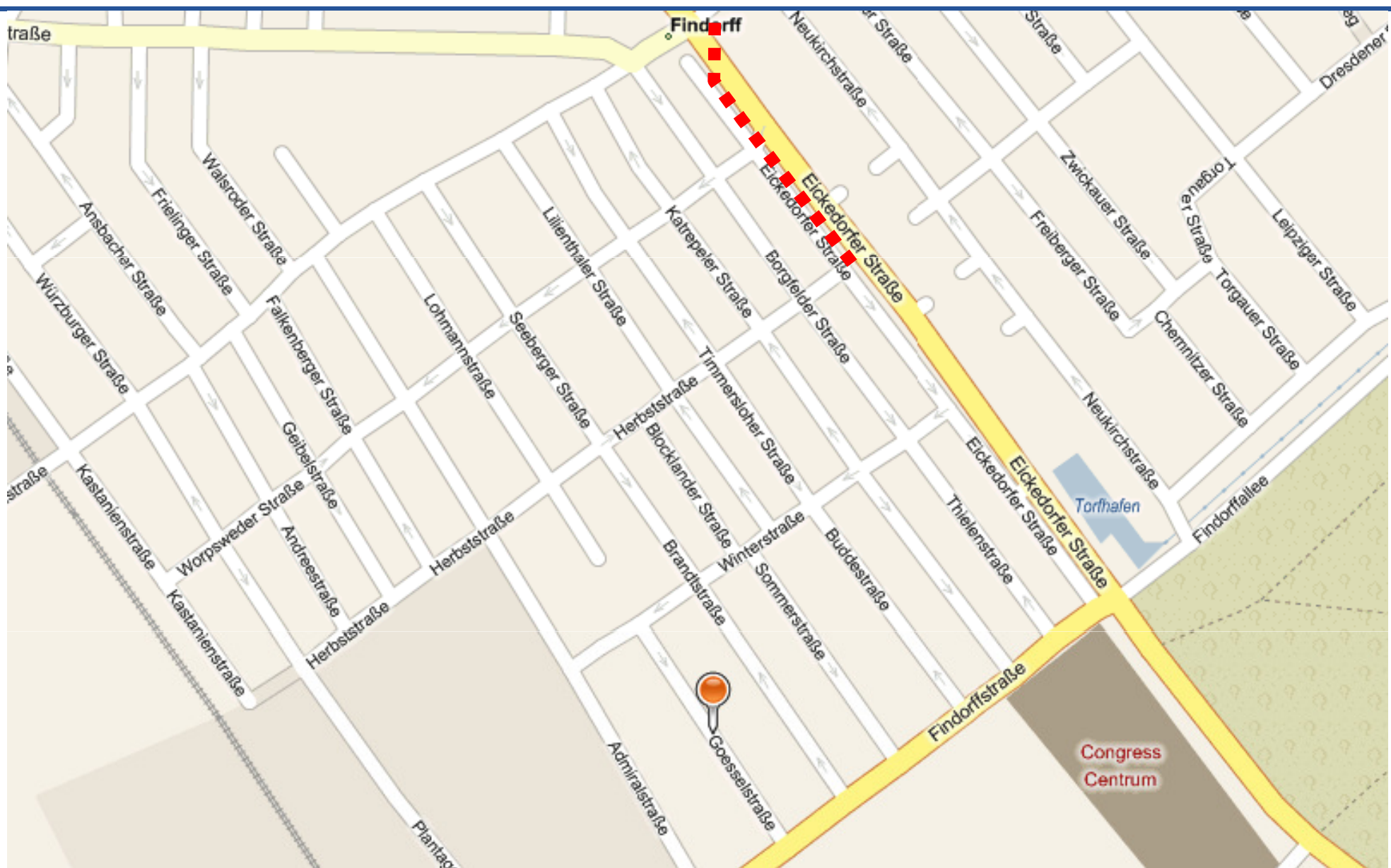
Zeitschritt 11



Zeitschritt 12



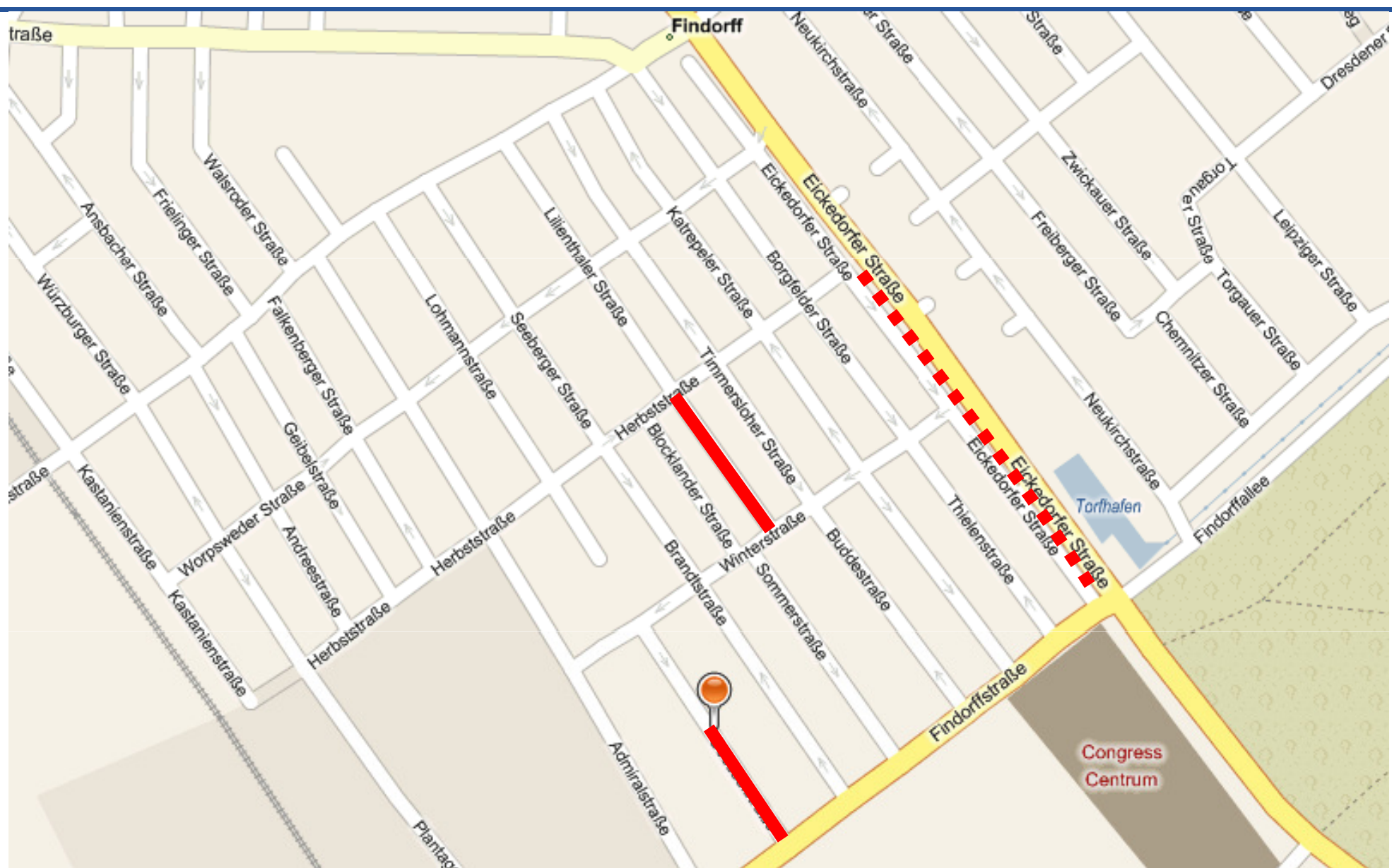
Zeitschritt 13



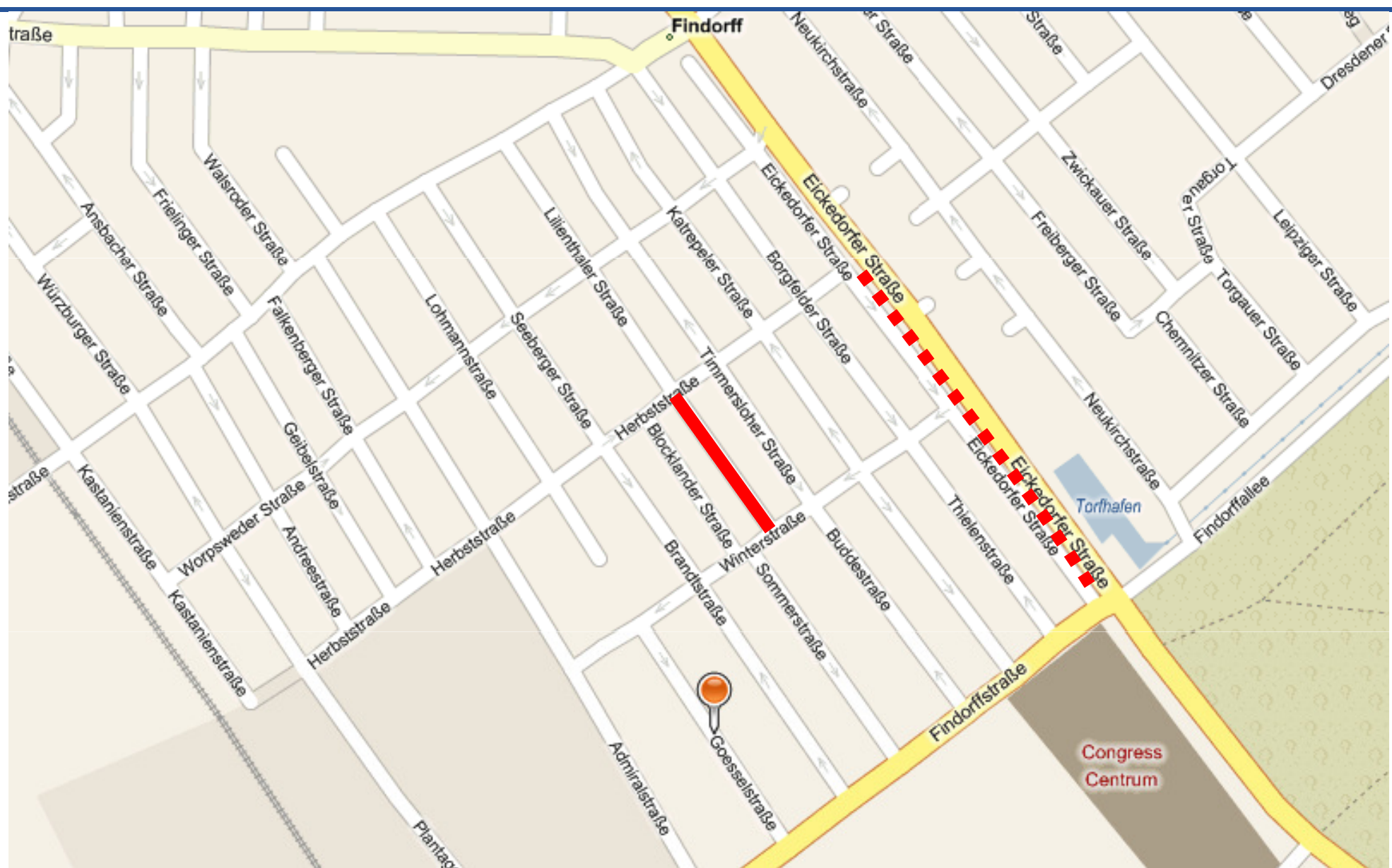
Zeitschritt 14



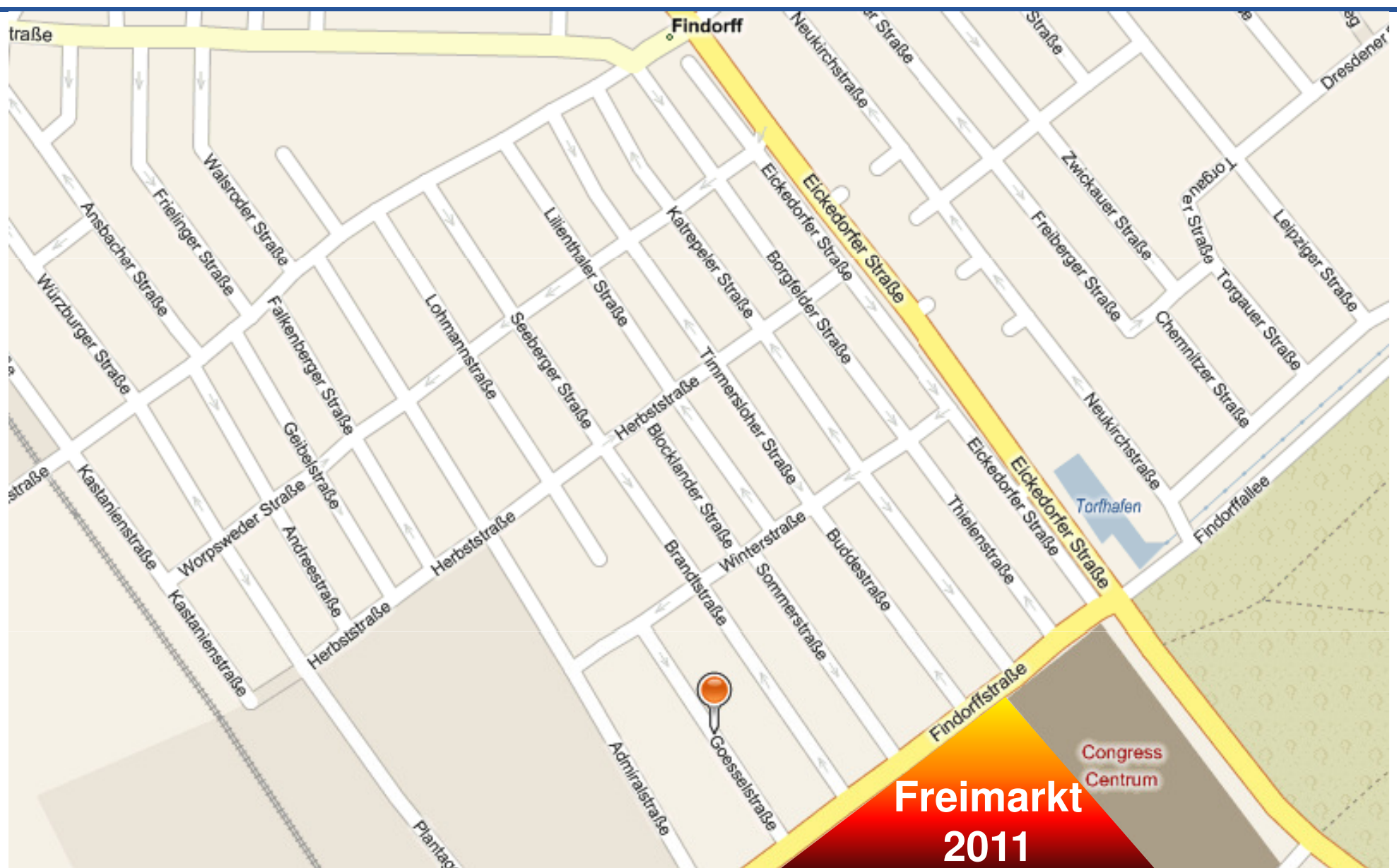
Zeitschritt 15

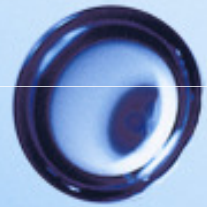


Zeitschritt 16



Zeitschritt 17





hanseWasser

