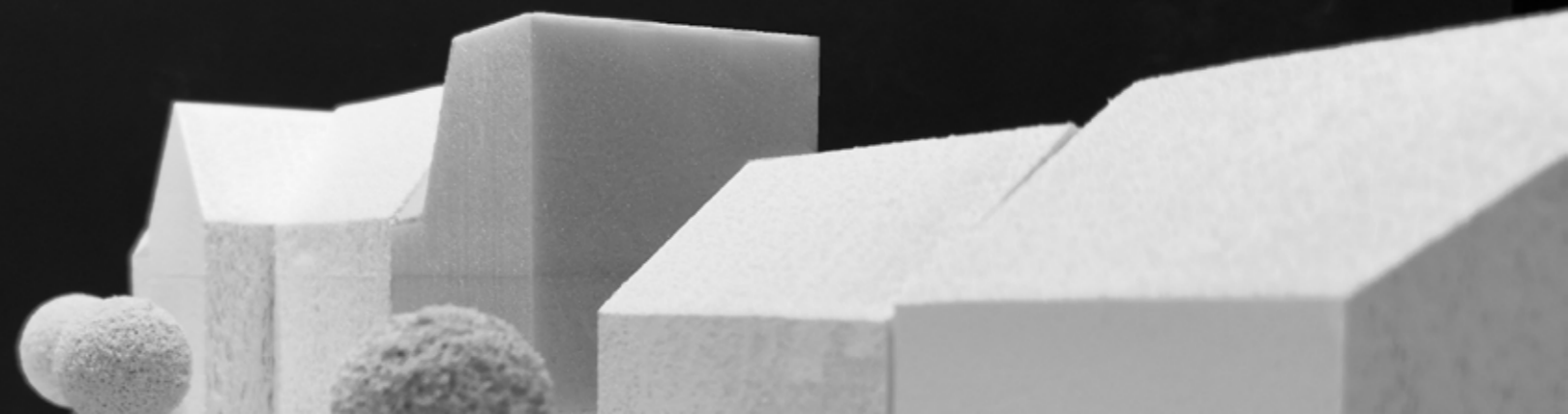


Torhaus I
Dedesdorfer Platz

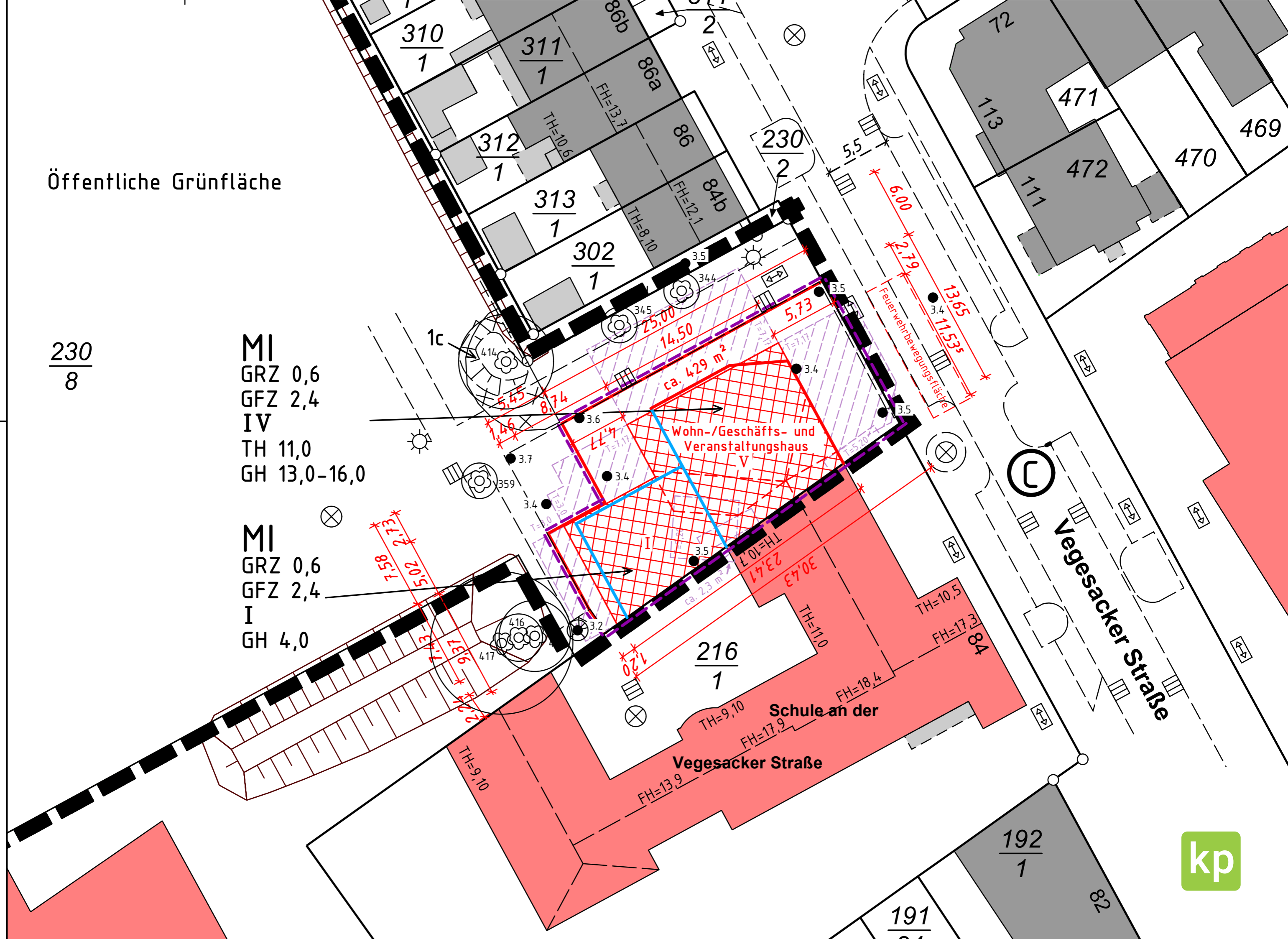


Öffentliche Grünfläche

$\frac{230}{8}$

MI
GRZ 0,6
GFZ 2,4
IV
TH 11,0
GH 13,0-16,0

MI
GRZ 0,6
GFZ 2,4
I
GH 4,0

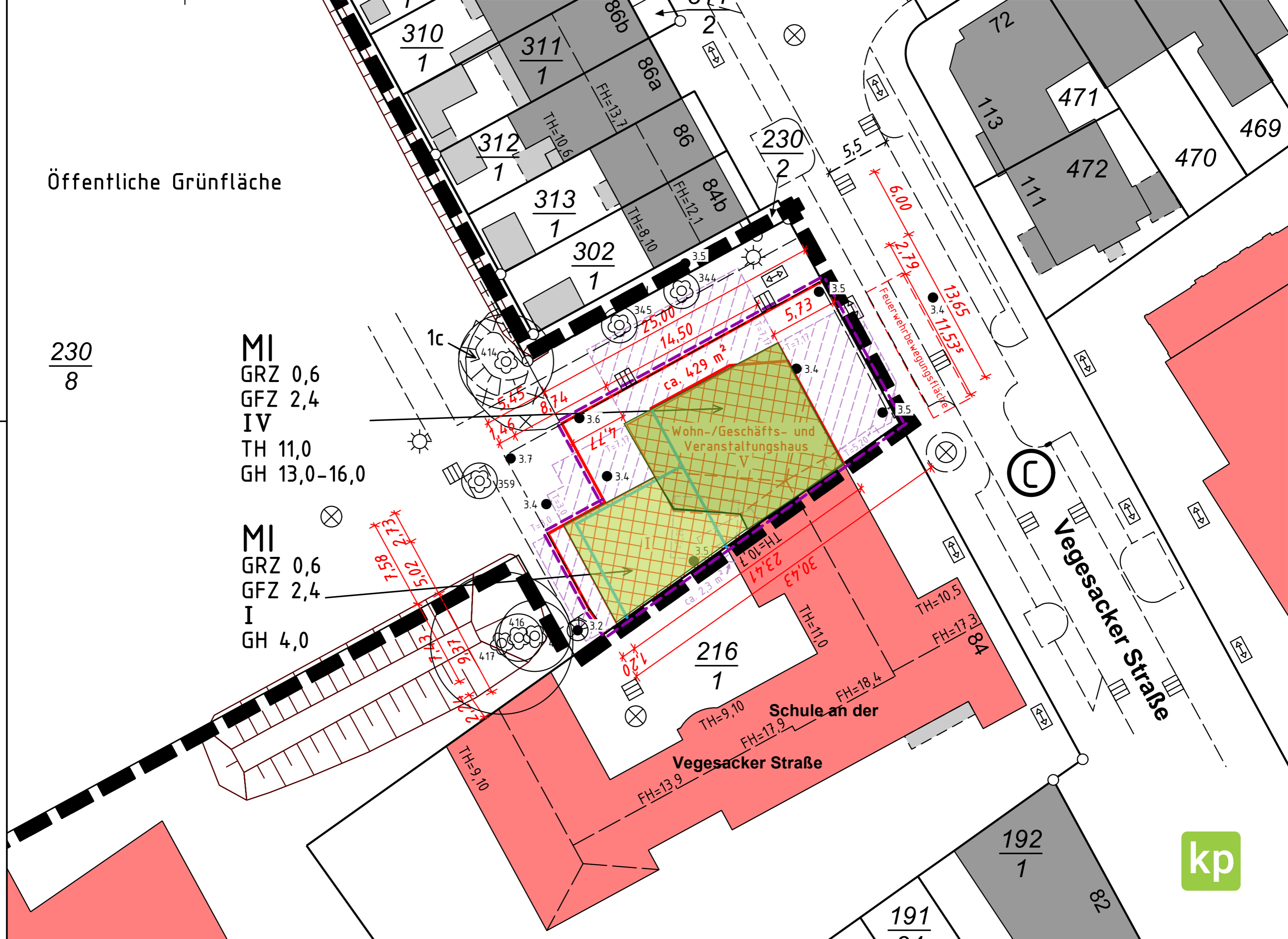


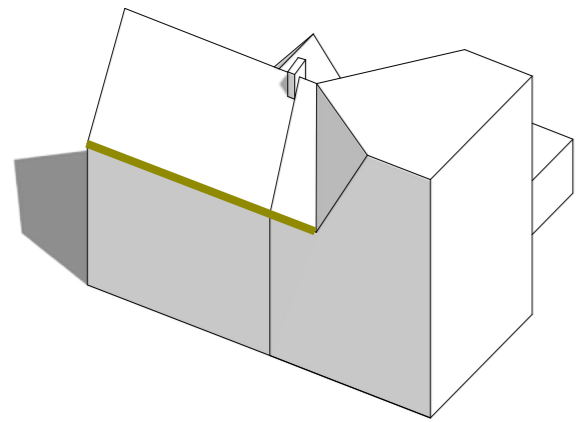
Öffentliche Grünfläche

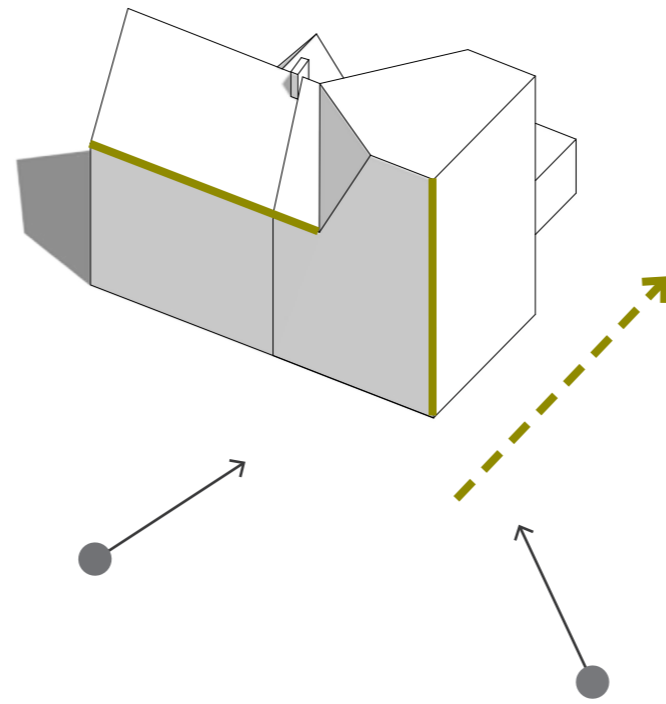
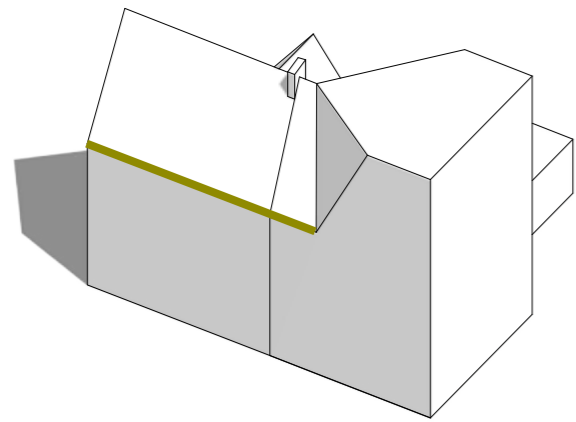
$\frac{230}{8}$

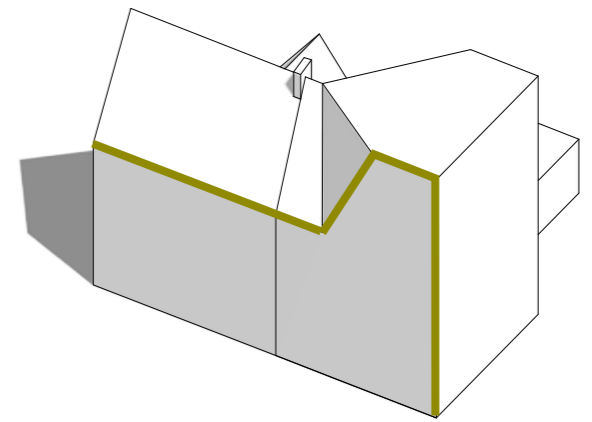
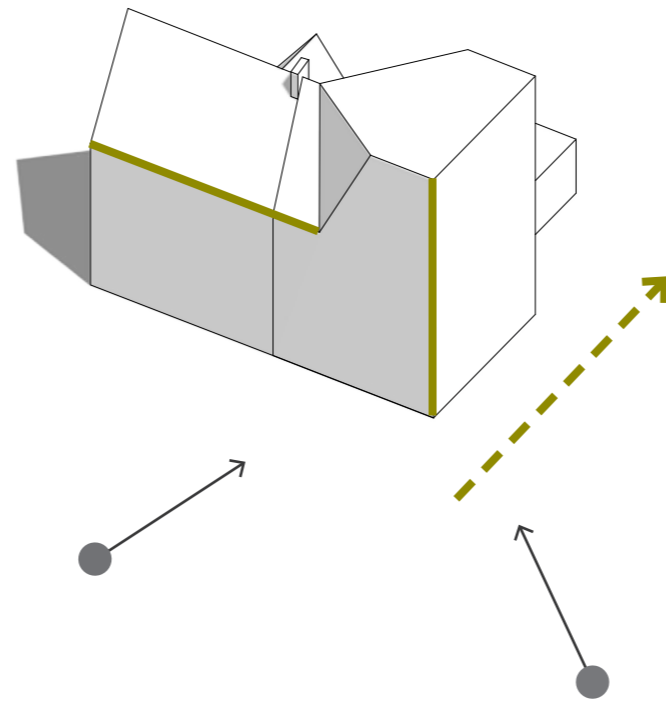
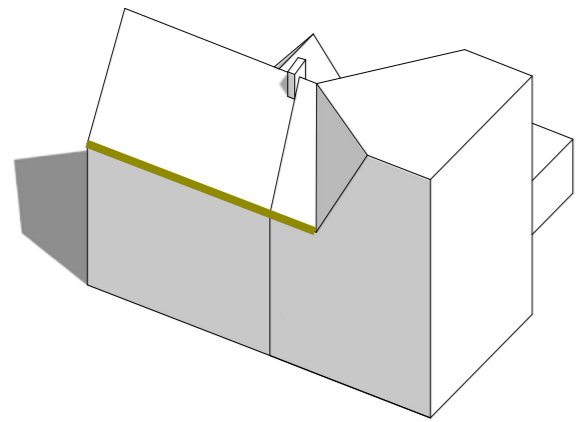
MI
GRZ 0,6
GFZ 2,4
IV
TH 11,0
GH 13,0-16,0

MI
GRZ 0,6
GFZ 2,4
I
GH 4,0











Ansicht Vegesacker Straße

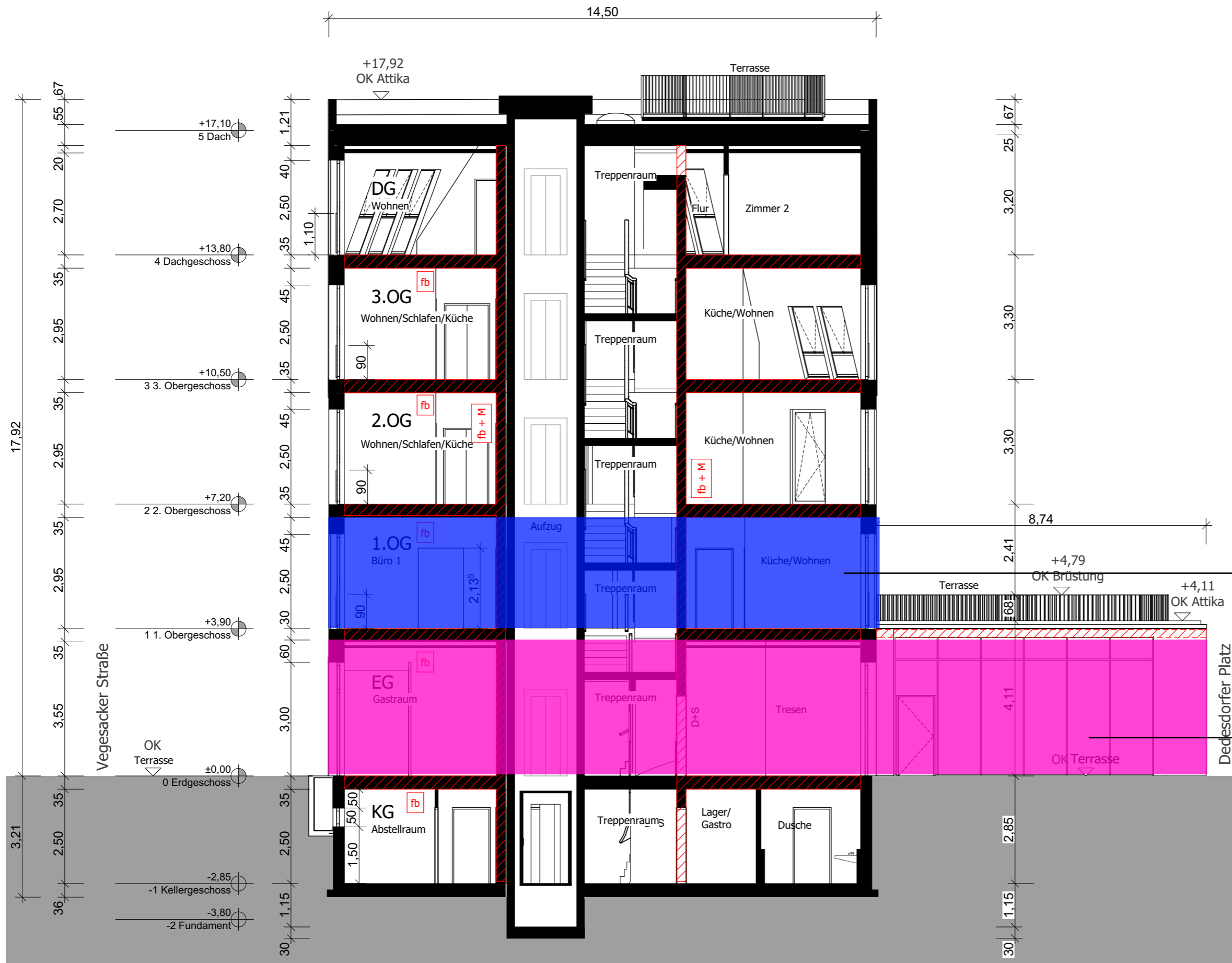


Ansicht Durchgang

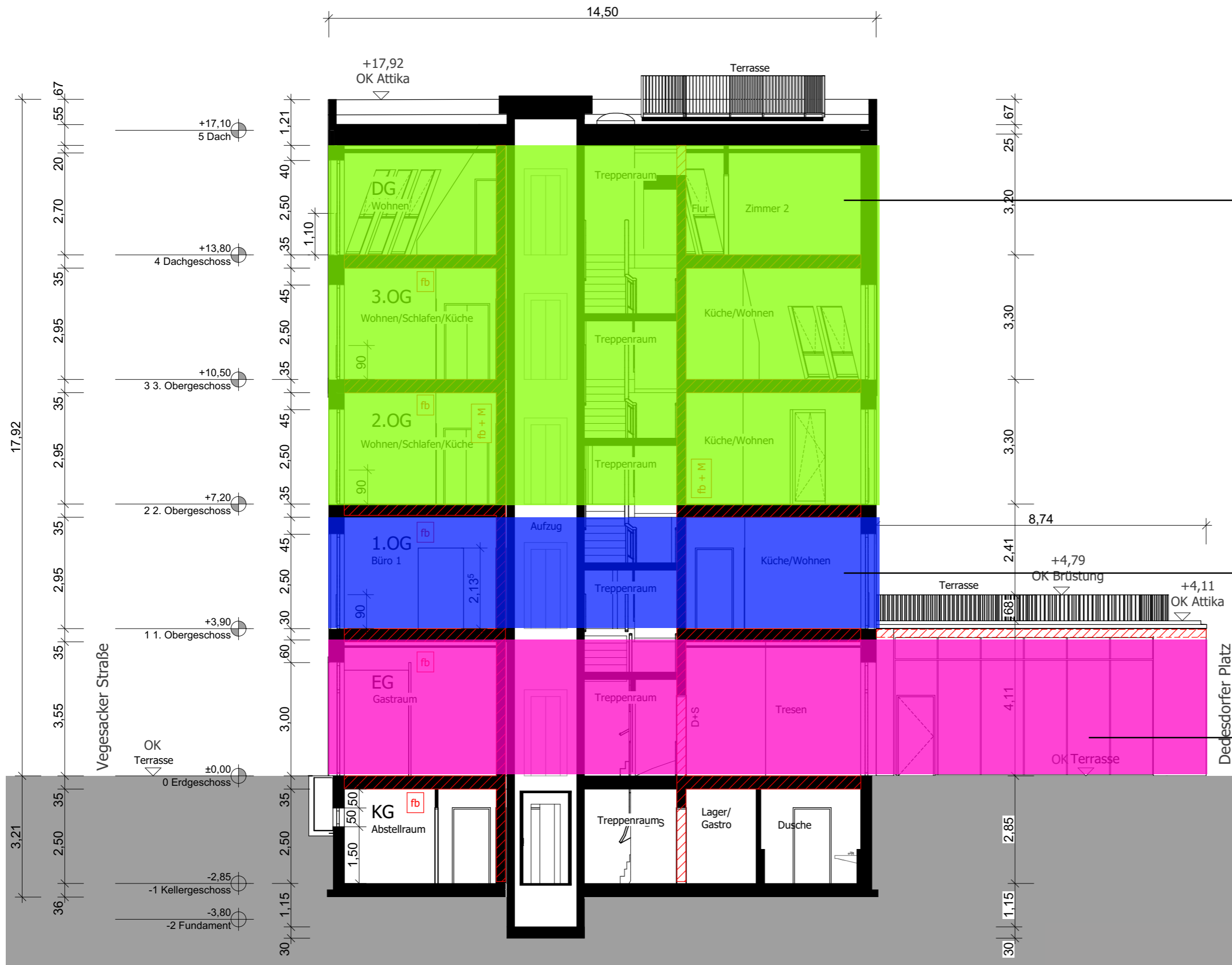
Ansicht Dedesdorfer Platz



Veranstaltung + Gastronomie:



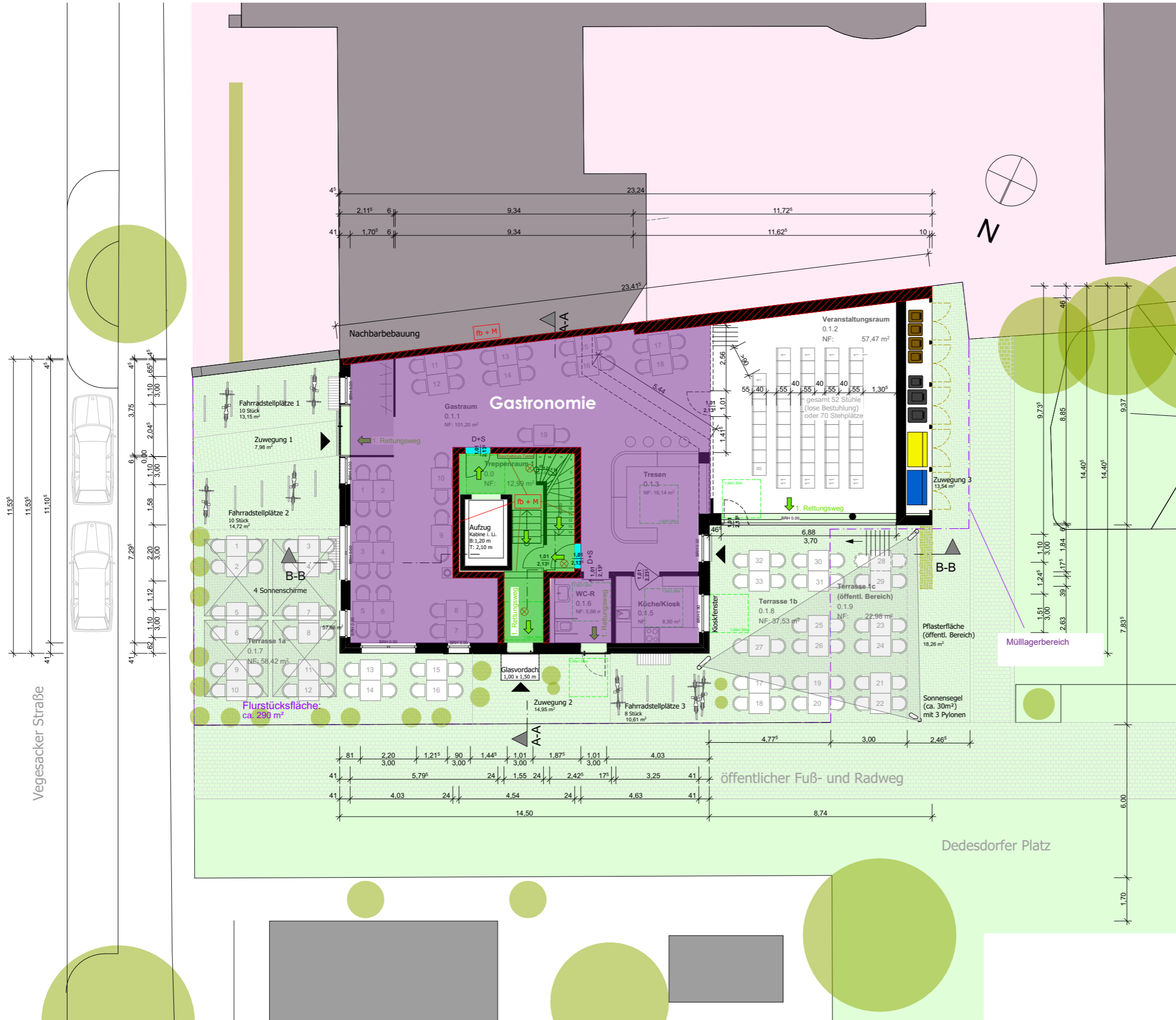
- Büro- + Wohnnutzung:
- 1 rollstuhlgerechte WE Büroflächen
- Veranstaltung + Gastronomie:
- Kneipe/Veranstaltung/Seminare/Quartierszentrum

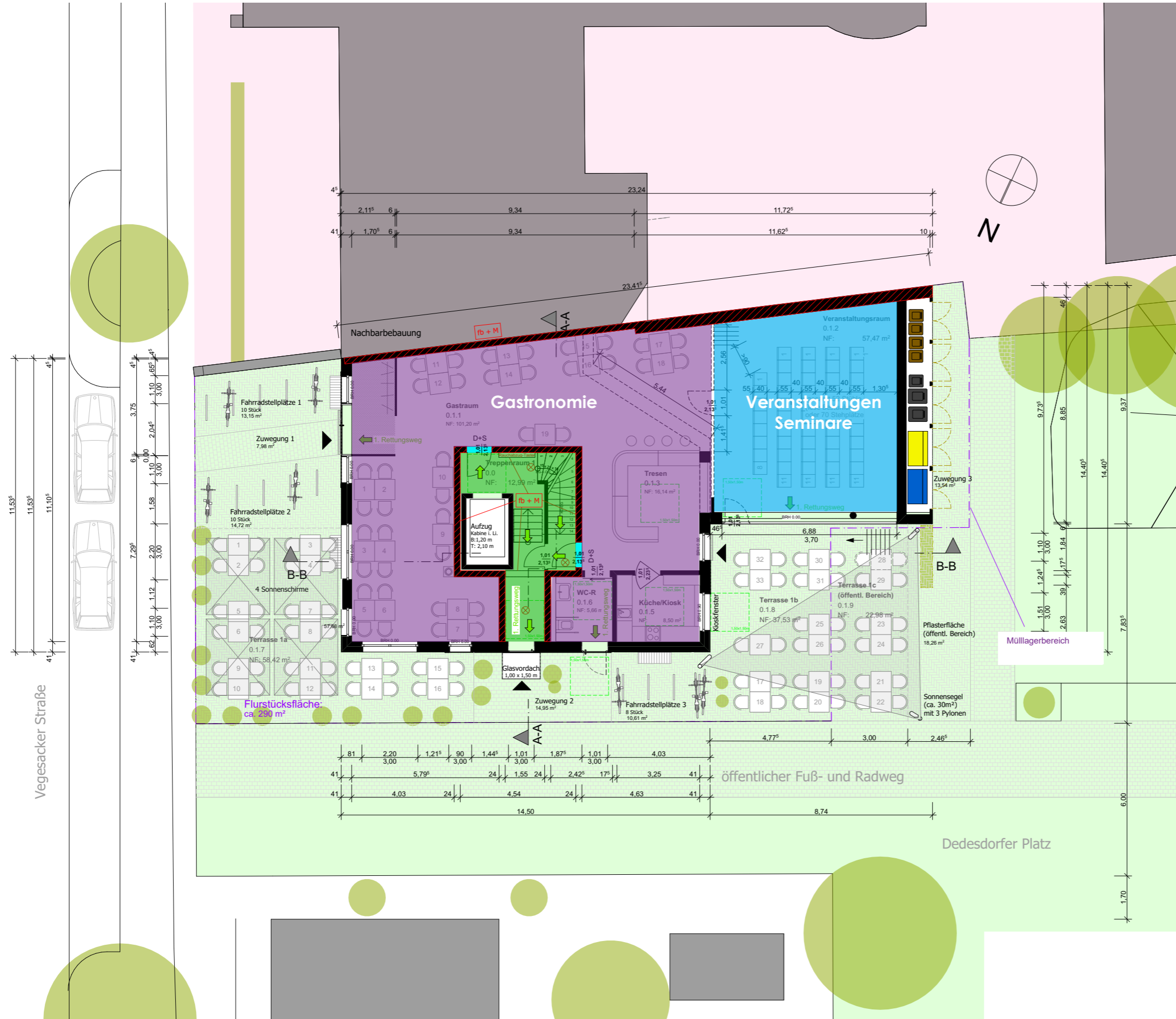


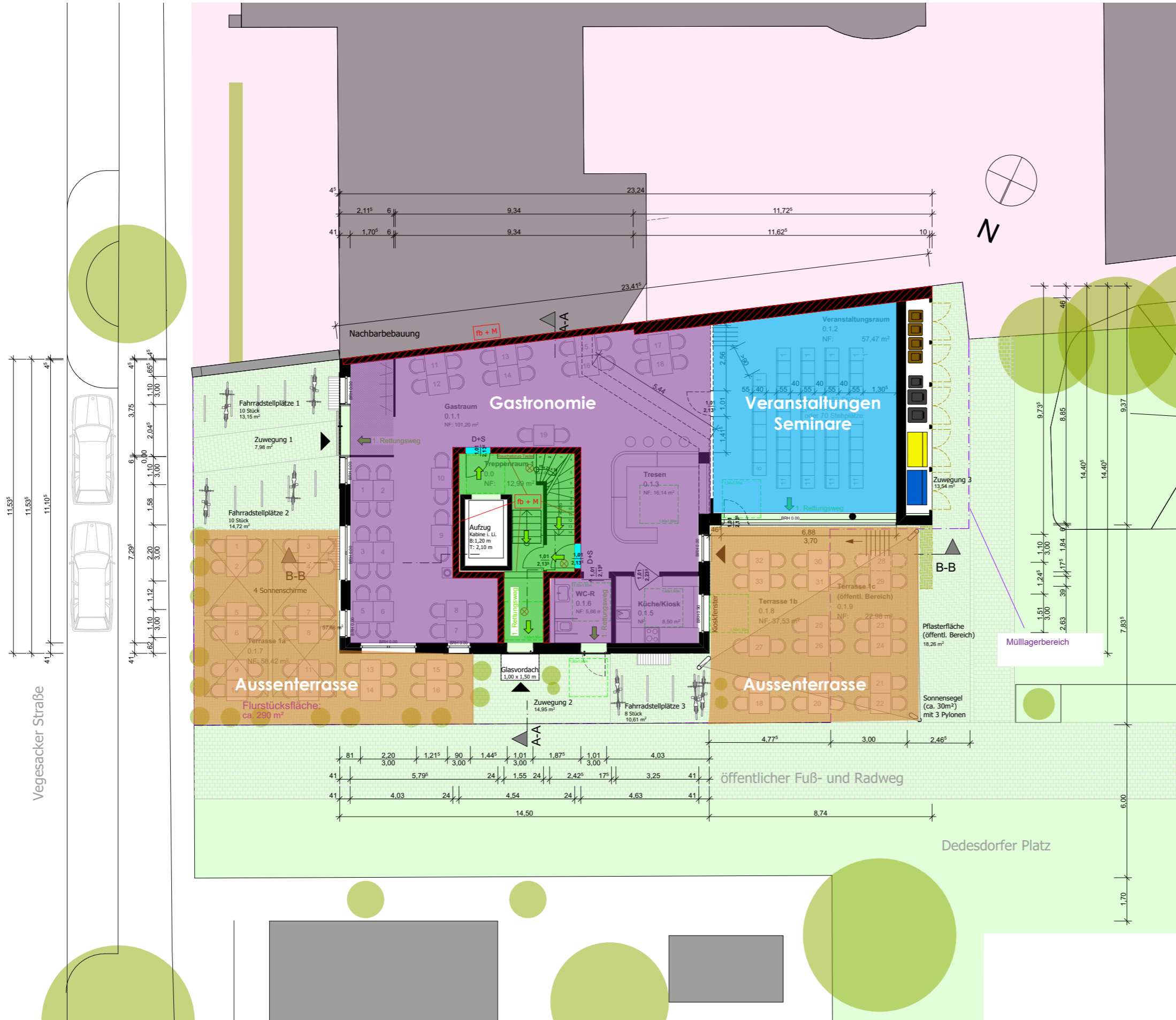
Wohnnutzung:
 2 rollstuhlgerechte WE
 4 barrierefreie WE
 1 reguläre WE

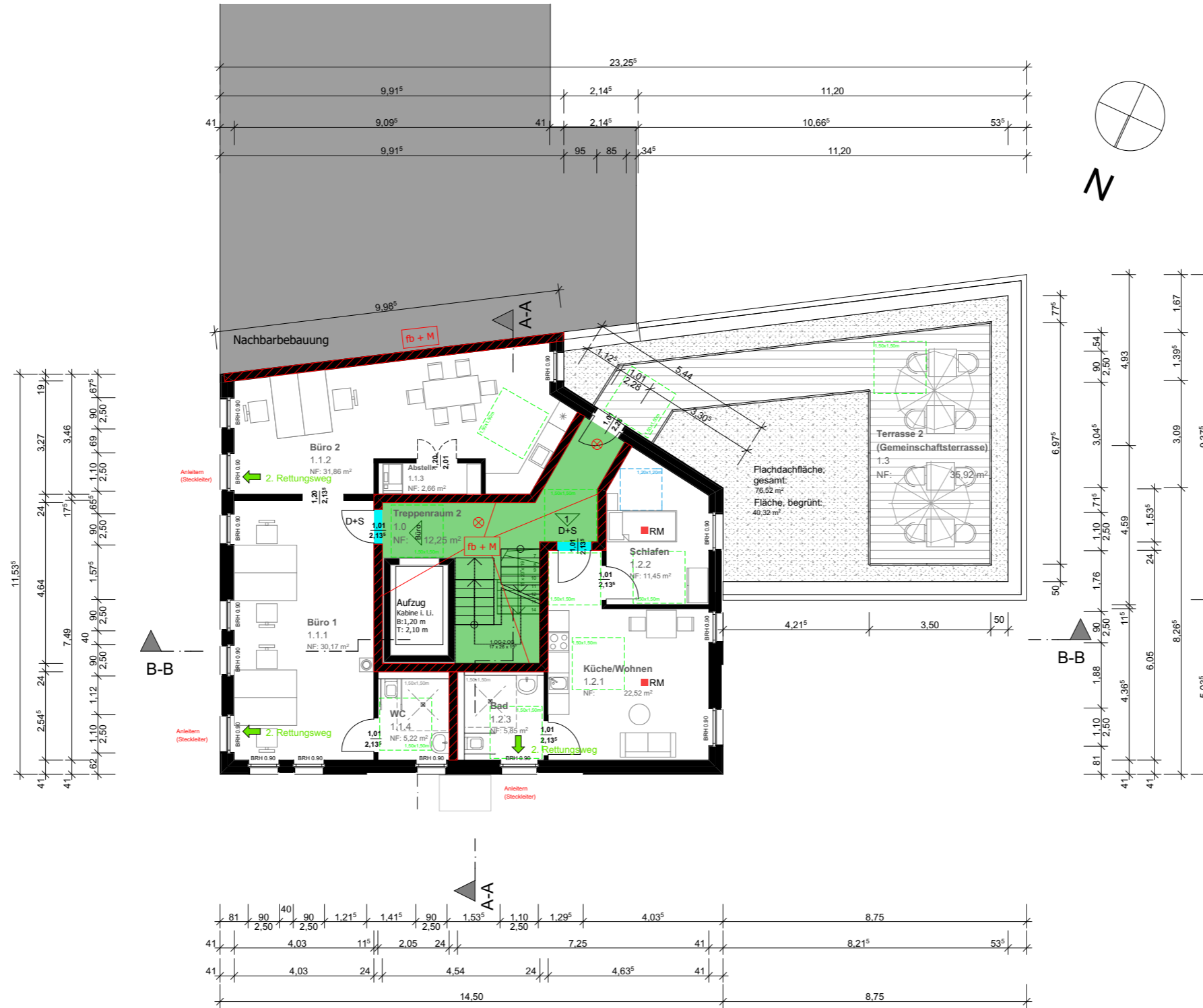
Büro- + Wohnnutzung:
 1 rollstuhlgerechte WE
 Büroflächen

Veranstaltung + Gastronomie:
 Kneipe/Veranstaltung/
 Seminare/Quartierszentrum

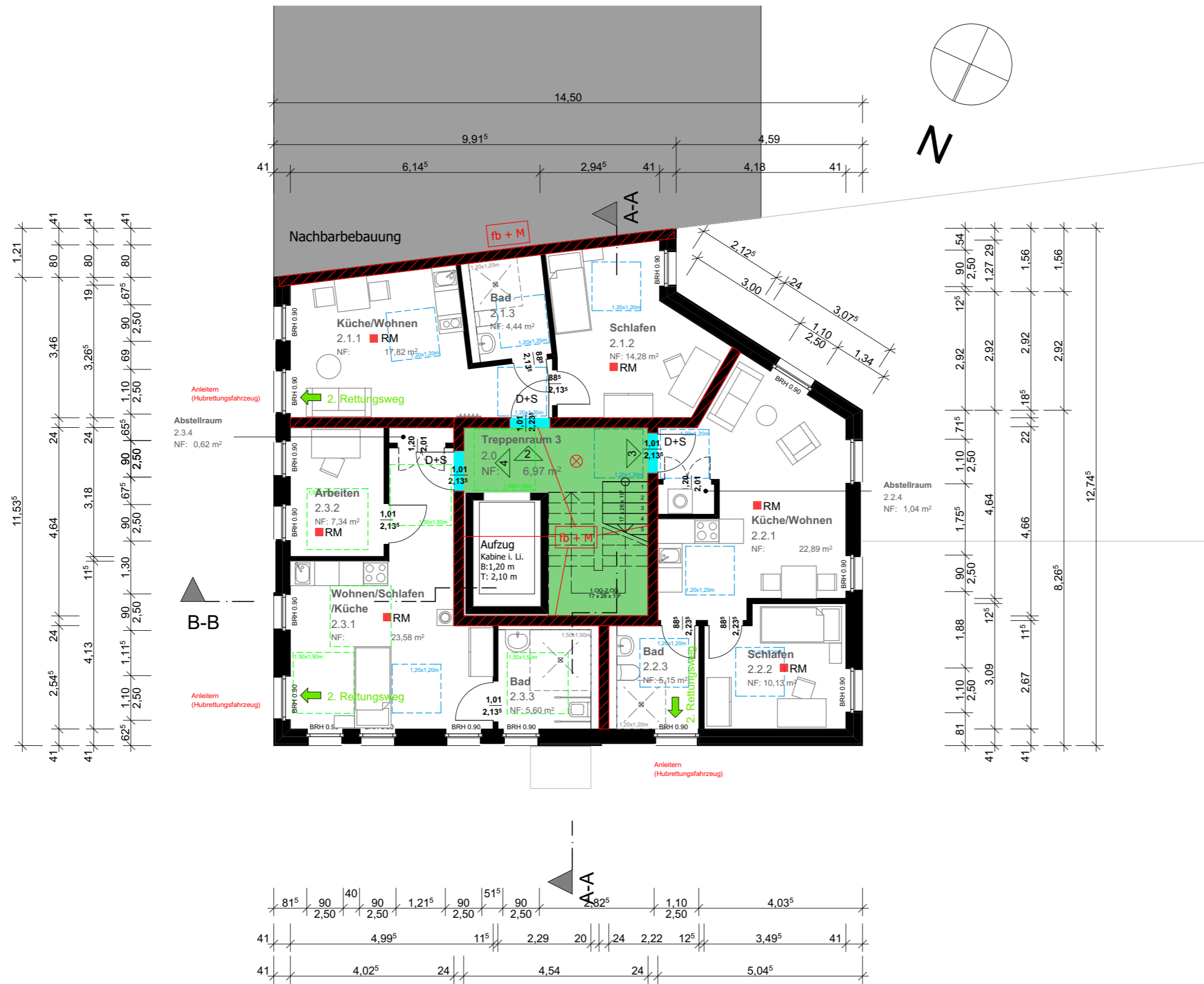


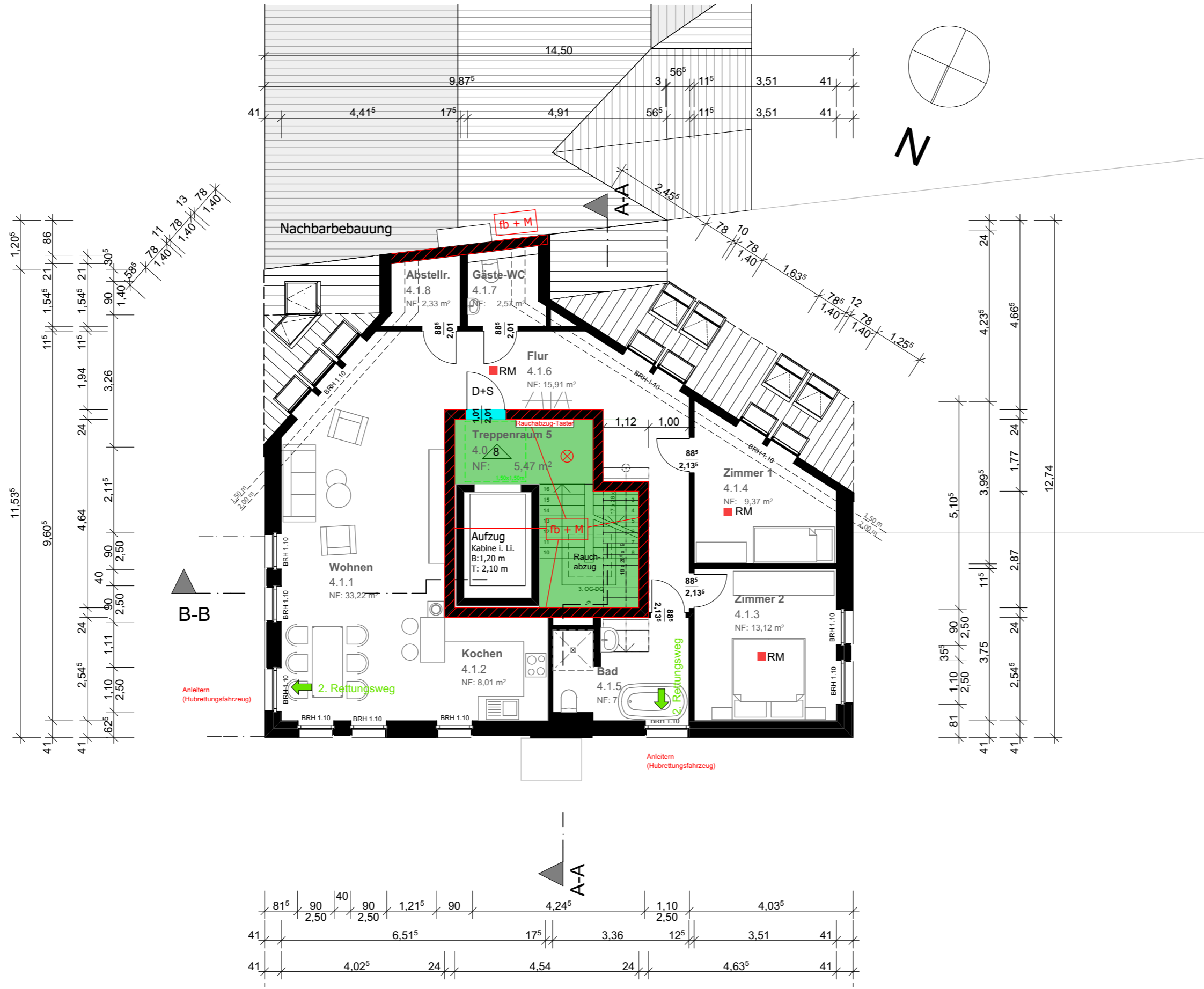






2.+3.OG







MARTINS CLUB Walle